

# Recovery Strategy and Action Plan for the Mapleleaf (*Quadrula quadrula*) in Canada (Great Lakes – Upper St. Lawrence Population)

## Mapleleaf



2018



**Recommended Citation:**

Fisheries and Oceans Canada. 2018. Recovery strategy and action plan for the Mapleleaf (*Quadrula quadrula*) in Canada (Great Lakes-Upper St. Lawrence population) [Proposed]. *Species at Risk Act Recovery Strategy Series*. Fisheries and Oceans Canada, Ottawa. vi + 59 pp.

For copies of the recovery strategy and action plan, or for additional information on species at risk, including COSEWIC Status Reports, residence descriptions, action plans, and other related recovery documents, please visit the [Species at Risk Public Registry](#).

**Cover Illustration:** Courtesy of S. Staton, Fisheries and Oceans Canada

Également disponible en français sous le titre  
« Programme de rétablissement et plan d'action visant la mulette-feuille d'érable (*Quadrula quadrula*) au Canada (population des Grands Lacs - du haut Saint-Laurent) »

© Her Majesty the Queen in Right of Canada, represented by the Minister of Fisheries and Oceans, 2018. All rights reserved.

ISBN ISBN to come

Catalogue no. Catalogue no. to come

*Content (excluding the illustrations) may be used without permission, with appropriate credit to the source.*

## Preface

The federal, provincial, and territorial government signatories under the Accord for the Protection of Species at Risk (1996) agreed to establish complementary legislation and programs that provide for effective protection of species at risk throughout Canada. Under the *Species at Risk Act* (S.C. 2002, c.29) (SARA), the federal competent ministers are responsible for the preparation of recovery strategies and action plans for listed Extirpated, Endangered, and Threatened species and are required to report on progress within five years after the publication of the final document on the Species at Risk Public Registry.

This document has been prepared to meet the requirements under SARA of both a recovery strategy and an action plan. As such, it provides both the strategic direction for the recovery of the species, including the population and distribution objectives for the species, as well as the more detailed recovery measures to support this strategic direction, outlining what is required to achieve the objectives. SARA requires that an action plan also include an evaluation of the socio-economic costs of the action plan and the benefits to be derived from its implementation. It is important to note that the setting of population and distribution objectives and the identification of critical habitat are science-based exercises and socio-economic factors were not considered in their development. The socio-economic evaluation only applies to the more detailed recovery measures. The recovery strategy and action plan are considered part of a series of documents that are linked and should be taken into consideration together, along with the Committee on the Status of Endangered Wildlife in Canada status report.

The Minister of Fisheries and Oceans Canada is the competent minister under SARA for Mapleleaf (Great Lakes – Upper St. Lawrence population) and has prepared this recovery strategy and action plan, as per section 37 and 47 of SARA. It has been prepared in cooperation with the Government of Ontario, Environment and Climate Change Canada, Central Michigan University, University of Guelph, Bishop Mills Natural History Centre, St. Clair Region Conservation Authority, Ausable-Bayfield Conservation Authority, Upper Thames River Conservation Authority, Lower Thames Valley Conservation Authority, Grand River Conservation Authority, and Niagara Peninsula Conservation Authority.

Success in the recovery of this species depends on the commitment and cooperation of many different constituencies that will be involved in implementing the directions set out in this recovery strategy and action plan and will not be achieved by Fisheries and Oceans Canada, or any other jurisdiction alone. All Canadians are invited to join in supporting and implementing this recovery strategy and action plan for the benefit of Mapleleaf (Great Lakes – Upper St. Lawrence population) and Canadian society as a whole.

Implementation of this recovery strategy and action plan is subject to appropriations, priorities, and budgetary constraints of the participating jurisdictions and organizations.

## **Acknowledgments**

Fisheries and Oceans Canada (DFO) would like to thank the authors, Peter L. Jarvis, Pat Dimond, Amy Boyko (DFO), and Shawn Staton (DFO) for the preparation of this document. The support of the following organizations was instrumental in the development of the Mapleleaf recovery strategy and action plan: Ontario Freshwater Mussel Recovery Team, Environment and Climate Change Canada, Ontario Ministry of Natural Resources and Forestry (OMNRF), University of Guelph, Central Michigan University, Ausable-Bayfield Conservation Authority, Grand River Conservation Authority, St. Clair Region Conservation Authority, Upper Thames River Conservation Authority, Lower Thames Valley Conservation Authority, Niagara Peninsula Conservation Authority, and Bishop Mills Natural History Centre. Mapping was produced by Shady Abbas (DFO contractor) and Adriana Rivas Ruiz (DFO).

## Executive Summary

The Mapleleaf is a medium-sized (up to 12 cm) member of the freshwater bivalve family Unionidae. The shell is approximately square in outline, relatively thick and displays colour variations ranging from yellowish green to light brown in juveniles, and greenish brown to dark brown in older individuals. Typically, two rows of raised nodules extending in a v-shape from the point of shell union (umbo or beak) to shell edge (ventral margin) distinguish the outer shell surface of this bivalve species, while the interior (nacre) of the shell is white.

There are two designatable units (DUs) of Mapleleaf in Canada: the Great Lakes – Upper St. Lawrence DU in Ontario and the Saskatchewan – Nelson DU in Manitoba. In 2006, the Mapleleaf (Great Lakes – Upper St. Lawrence DU) was designated as Threatened by the Committee on the Status of Endangered Wildlife in Canada (COSEWIC), and was listed on Schedule 1 of the *Species at Risk Act* (SARA) in 2013. The COSEWIC designation was based on the species' restricted distribution as well as past and continuing declines. The Saskatchewan – Nelson DU has been designated as Endangered by COSEWIC and was also listed under SARA in 2013. A separate recovery strategy is being developed for the Saskatchewan – Nelson DU.

The principal threats identified for Mapleleaf (Great Lakes – Upper St. Lawrence DU) (Mapleleaf from this point forward) include activities that degrade water quality and habitat, most prominently, run-off and discharge from agricultural, municipal and industrial activities, which often contain metals and nutrients and often result in increased siltation rates. In Ontario, invading dreissenid mussels (Zebra Mussel and Quagga Mussel), which began their spread in the mid-1980s, have resulted in profound changes in unionid community structure and continue to be a major threat for existing populations as they outcompete native mussels for habitat and food resources.

The population and distribution objectives for Mapleleaf in Ontario are to return or maintain self-sustaining populations in the following locations where live animals currently exist: Ausable River, Sydenham River (including the North Sydenham River and Bear Creek), Thames River (including McGregor and Baptiste creeks), Ruscom River, Grand River, Welland River, Twenty Mile Creek/Jordan Harbour, and Sixteen Mile Creek. The populations at these locations could be considered recovered when they demonstrate active signs of reproduction and recruitment throughout their known distribution at each location, such that populations are stable or increasing; in addition, risk from threats at these locations would need to be reduced to 'low'.

Using available data, critical habitat has been identified at this time for Mapleleaf in the following locations: Ausable River, Sydenham River (including the North Sydenham River and Bear Creek), Thames River (including McGregor and Baptiste creeks), Ruscom River, Grand River, Welland River, Jordan Harbour/Twenty Mile Creek, and Sixteen Mile Creek. Additional areas of potential critical habitat for this species in Lake St. Clair may be considered in collaboration with Walpole Island First Nation if supported by the results of further surveys. A schedule of studies has been developed that outlines the necessary steps to obtain the information to further refine these critical habitat descriptions. Until critical habitat has been fully identified, the recovery team recommends that currently occupied habitats are in need of conservation.

Recovery approaches have been organized into three broad categories: (1) Research and Monitoring; (2) Management and Coordination; and, (3) Communication and Outreach. These approaches are best accomplished through cooperation with existing ecosystem recovery

teams and research efforts. Most of these will prove beneficial to all aquatic species at risk and eliminate duplication of effort.

The action plan portion of this document provides the detailed recovery planning in support of the strategic direction set out in the recovery strategy section of the document. The plan outlines what needs to be done to achieve the population and distribution objectives, including the measures to be taken to address the threats and monitor the recovery of the species, as well as the measures to protect critical habitat. Socio-economic impacts of implementing the action plan are also evaluated.

## Recovery Feasibility Summary

Recovery of Mapleleaf is believed to be both biologically and technically feasible. The following feasibility criteria<sup>1</sup> have been met for the species:

- 1. Individuals of Mapleleaf that are capable of reproduction are available now or in the foreseeable future to sustain the population or improve its abundance.*

Yes. Reproducing populations currently exist within the Ontario range of the species (e.g., Ausable, Sydenham, Thames, and Grand rivers) and could be used for translocations or artificial propagation if necessary.

- 2. Sufficient suitable habitat is available to support this species or could be made available through habitat management or restoration.*

Yes. Suitable habitat is present at several locations with extant populations. At locations with extirpated or declining populations, suitable habitat may be made available through current and proposed restoration efforts.

- 3. The primary threats to the species or its habitats (including threats outside Canada) can be avoided or mitigated.*

Yes. Significant threats such as sedimentation, and nutrient and contaminant loading can be mitigated through proposed recovery techniques; throughout much of the Mapleleaf range, recovery efforts are already underway. While action has been taken to limit the expansion of dreissenid mussels, recovery of Mapleleaf populations to historical levels in heavily infested areas (i.e., Great Lakes and connecting waterways) is not possible; however, the establishment of managed refuge sites is being investigated within such locations.

- 4. Recovery techniques exist to achieve the population and distribution objectives or can be expected to be developed within a reasonable timeframe.*

Yes. Techniques to reduce identified threats (e.g., Best Management Practices to reduce sedimentation) and restore habitats are well known and proven to be effective. The effort expended to achieve recovery will not be uniform across all populations with much greater effort required to improve habitat at locations with reduced populations.

---

<sup>1</sup> Draft Policy on the Feasibility of Recovery, *Species at Risk Act* Policy. January 2005.

## Table of Contents

Preface.....	i
Acknowledgments .....	ii
Executive Summary .....	iii
Recovery Feasibility Summary .....	v
1. COSEWIC Species Assessment Information .....	1
2. Species Status Information .....	1
3. Species Information.....	2
3.1 Species Description.....	2
3.2 Population and Distribution.....	2
3.3 Needs of the Mapleleaf .....	8
4. Threats .....	10
4.1 Threat Assessment .....	10
4.2 Description of Threats .....	12
5. Population and Distribution Objectives.....	17
6. Broad Strategies and Recovery Actions.....	17
6.1 Actions Already Completed or Currently Underway .....	18
6.2 Recovery and Action Planning .....	19
6.3 Narrative to Support the Recovery Planning and Implementation Tables ....	23
7. Critical Habitat.....	25
7.1 General Identification of Critical Habitat for the Mapleleaf.....	25
7.2 Information and Methods Used to Identify Critical Habitat.....	25
7.3 Identification of Critical Habitat: Biophysical Functions, Features, and Their Attributes .....	26
7.4 Identification of Critical Habitat: Geospatial .....	28
7.5 Schedule of Studies to Identify Critical Habitat.....	41
7.6 Examples of Activities Likely to Result in the Destruction of Critical Habitat	42
7.7 Proposed Measures to Protect Critical Habitat.....	47
8. Relevant Habitat Legislation.....	47
9. Socio-Economic Evaluation of the Action Plan.....	47
10. Measuring Progress .....	50
11. References.....	51
Recovery Team Members .....	58
Appendix A: Effects on the Environment and Other Species .....	59



## 1. COSEWIC<sup>2</sup> Species Assessment Information

**Date of Assessment:** April 2006

**Common Name (population):** Mapleleaf (Great Lakes – Upper St. Lawrence population)

**Scientific Name:** *Quadrula quadrula*

**COSEWIC Status:** Threatened

**Reason for Designation:** This heavy shelled mussel that is shaped like a maple leaf, has a very small area of occupancy in watersheds dominated by agriculture with past and continuing declines due to habitat loss and degradation. Although the mussel has been lost from the Great Lakes and connecting channels due to zebra mussels, the number of mature individuals appear to be very large in two of the watersheds and three of five watersheds have recovery teams in place for aquatic species at risk. Zebra mussels continue to be a potential threat in watersheds that have numerous impoundments.

**Canadian Occurrence:** Ontario

**COSEWIC Status History:** Designated Threatened in April 2006. Assessment based on a new status report.

## 2. Species Status Information

**Global Status:** The Mapleleaf (*Quadrula quadrula* Rafinesque, 1820) is globally listed as G5 (demonstrably widespread, abundant, and secure). In the U.S., it is considered N5 (secure) but there are states where this species is listed as imperilled to critically imperilled (NatureServe 2015) (Table 1). In Canada, Mapleleaf is considered N2N3 (nationally vulnerable) and occurs only in Ontario and Manitoba (NatureServe 2015) (Table 1). In both provinces, an analysis of the historical records indicates a decline in the overall distribution of the species.

**Canadian Status:** In Canada, Mapleleaf has a national ranking of N2N3, and is designated as S2 (imperilled) in Ontario and Manitoba (NatureServe 2015). It was designated as Endangered in Manitoba and Threatened in Ontario in 2006 by COSEWIC (COSEWIC 2006). In Manitoba, it is listed as Endangered under the federal *Species at Risk Act* (SARA). In Ontario, it is listed as Threatened under both SARA and Ontario's *Endangered Species Act, 2007*.

**Percent of Global Distribution and Abundance in Canada:** Mapleleaf has been lost from approximately 49% of its former range in Ontario. Specifically, its extent of occurrence is approximately 13 000 km<sup>2</sup> and its area of occupancy is approximately 35.2 km<sup>2</sup> (Ausable, Sydenham, Thames, and Grand rivers). In Manitoba, its extent of occurrence is 11 500 km<sup>2</sup> and its area of occupancy is approximately 36.3 km<sup>2</sup> (Assiniboine and Bloodvein rivers) (COSEWIC 2006).

<sup>2</sup> COSEWIC (Committee on the Status of Endangered Wildlife in Canada)

**Table 1.** Global, national and sub-national ranks for the Mapleleaf (NatureServe 2015).

<b>Rank</b>	<b>Jurisdiction Rank*</b>
<b>Global (G)</b>	G5 (last reviewed 19 May 2009)
<b>National (N)</b> Canada U.S.	N2N3 N5
<b>Subnational (S)</b> Canada U.S.	Manitoba (S2), Ontario (S2) Alabama (S4), Arkansas (S5), Illinois (S5), Indiana (S4), Iowa (SNR), Kansas (S4), Kentucky (S4S5), Louisiana (S5), Michigan (SNR), Minnesota (SNR), Mississippi (S5), Missouri (S4), Montana (SNA), Nebraska (SNR), New York (SH), North Dakota (S3), Ohio (S5), Oklahoma (S5), Pennsylvania (S1S2), South Dakota (S2), Tennessee (S5), Texas (S3), West Virginia (S2), Wisconsin (S3)

\* For an explanation of G, N and S-ranks, please refer to NatureServe (2015).

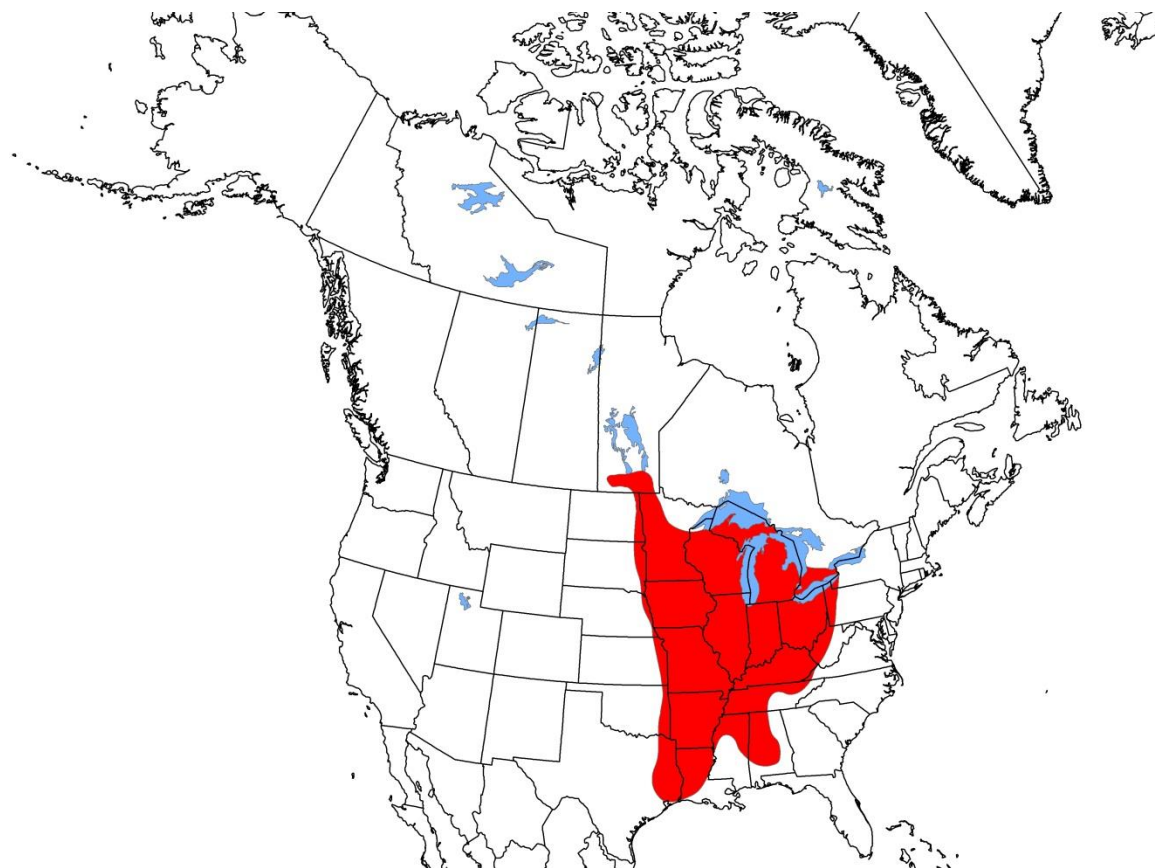
### 3. Species Information

#### 3.1 Species Description

The Mapleleaf is a medium-sized (up to 12 cm) member of the freshwater bivalve family Unionidae. The shell is approximately square in outline, relatively thick and displays colour variations ranging from yellowish green to light brown in juveniles and greenish brown to dark brown in older individuals. Typically, two rows of raised nodules extending in a v-shape from the point of shell union (umbo or beak) to shell edge (ventral margin) distinguish the outer shell surface of this bivalve species, while the interior (nacre) of the shell is white. The sex of the Mapleleaf cannot be determined based on external examination (i.e., it is not obviously sexually dimorphic; Bouvier and Morris 2011). More detailed information can be found in COSEWIC (2006).

#### 3.2 Population and Distribution

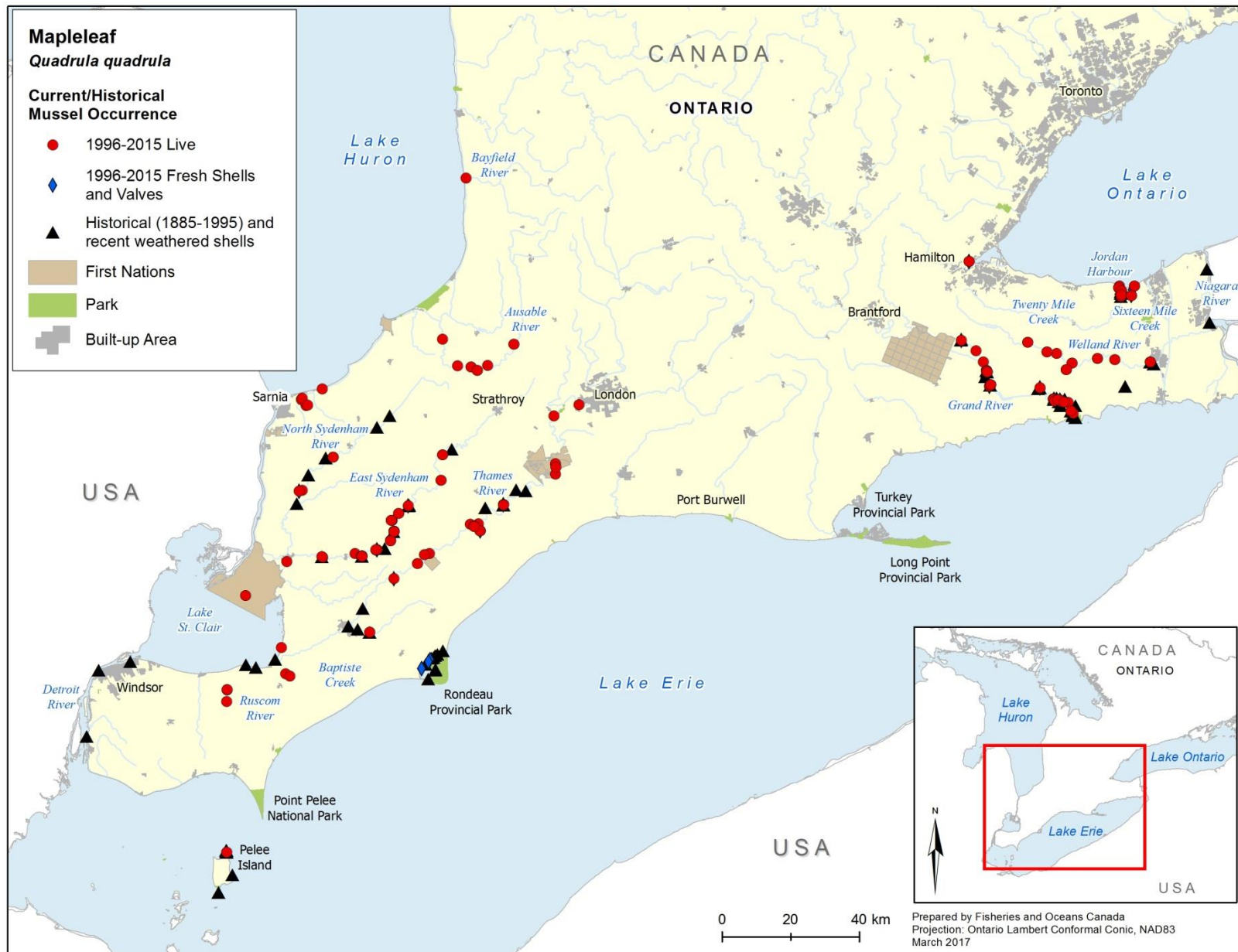
**Global Range:** The global range of the Mapleleaf extends throughout the Ohio-Mississippi River drainages from Louisiana to Texas and up to the Red River drainage in Manitoba and the Great Lakes drainage in Ontario (Figure 1). In the U.S., the distribution ranges from Texas in the southwest to Alabama in the southeast, while the northern distribution ranges from the Great Lakes drainage in Minnesota and Wisconsin to New York and extends into the Red River drainage in Minnesota and North Dakota (NatureServe 2015) (Figure 1).



**Figure 1.** Global distribution of the Mapleleaf (*Quadrula quadrula*) (modified from Royal Ontario Museum [ROM]).

**Canadian Range:** The Canadian distribution of Mapleleaf has been separated into two designatable units (DUs): the Great Lakes – Upper St. Lawrence populations (Ontario) (Figure 2) and the Saskatchewan – Nelson populations (Manitoba). This separation is based on genetic and geographic separations (COSEWIC 2006). In Manitoba, populations occur in the Assiniboine (lower reaches) and Bloodvein rivers, while Ontario populations appear mainly restricted to a few rivers (Ausable, Sydenham, Thames, Ruscom, Grand, Welland, Twenty Mile Creek, and Sixteen Mile Creek) draining into lakes Huron, St. Clair, Erie, and Ontario. In both provinces, an analysis of the historical records indicates a decline in the overall distribution of the species (COSEWIC 2006).

**Canadian Population Size:** To date, it appears that there are at least eight remaining populations of Mapleleaf in Ontario and two remaining in Manitoba. In Ontario, the overall population has been estimated at 5.5 million (COSEWIC 2006), with the largest population in the Thames, followed by the Grand and Sydenham rivers (Bouvier and Morris 2011). The largest population in Manitoba is found within the Assiniboine River and has been estimated at between 1-4 million individuals.



**Figure 2.** Distribution of Mapleleaf in Ontario, Great Lakes – Upper St. Lawrence population.

The following descriptions of the known occurrence of Mapleleaf in Ontario were modified from Bouvier and Morris (2011):

*Ausable River:* The first record of Mapleleaf in the Ausable River is from 2002, when nine live specimens were captured. Subsequent sampling at additional sites in 2004 yielded another nine specimens. In 2006, the 2002 site was revisited and 19 live Mapleleaf were observed (Ausable-Bayfield Conservation Authority [ABCA] unpubl. data). Additional sampling in 2008, 2009 and 2011 resulted in the capture of one, seven and ten live animals, respectively (ABCA, unpubl. data).

*Bayfield River:* No historical records exist for Mapleleaf in the Bayfield River. The species was first detected at this location in 2007 when a single Mapleleaf was collected. Limited sampling for freshwater mussels has occurred in the Bayfield River and therefore at this time it is not known whether a reproducing Mapleleaf population is present.

*Southern Lake Huron Tributaries:* In 2014, 23 live specimens were captured from three waterbodies draining into Lake Huron (Cow and Perch creeks, and Telfer Diversion Channel) by the St. Clair Region Conservation Authority (SCRCA).

*St. Clair River Delta:* The St. Clair River delta has been surveyed extensively over the last ten years, but Mapleleaf was not recorded until 2005, when a single live animal was recorded from Chematogan Bay during a snorkelling survey.

*Ruscom River:* In 1999, a freshwater mussel survey was conducted on the Ruscom River (a tributary on the south shore of Lake St. Clair), which yielded nine live Mapleleaf. As it was not possible to determine the size and status of this population based on a single sampling event, the site was revisited in 2010 and 26 live Mapleleaf were located at an additional two sites.

*Sydenham River:* Mapleleaf was first recorded in the Sydenham River in 1963 and has been found regularly in subsequent surveys until present day. The species' range in this system occurs from Wallaceburg to just upstream of Alvinston in the East Sydenham as well as the upper regions of the North Sydenham River in Bear Creek downstream of Petrolia. Many Mapleleaf locations have been sampled throughout the East Sydenham River from 1997 to 2012 and continue to yield live Mapleleaf.

*Thames River:* The Thames River has been sampled extensively since the mid-'90s and although a few records of Mapleleaf exist in the upper Thames River, the species is predominantly present in the middle and lower portions of the river (including two tributaries – McGregor and Baptiste creeks). A large number of live Mapleleaf (e.g., 225 from a single excavation) were detected during recent quadrat excavations in 2010 (Fisheries and Oceans Canada [DFO], unpubl. data). The Mapleleaf population in the lower Thames River is thought to be one of the most stable and abundant in Ontario.

*Great Lakes and Connecting Channels:* In Ontario, historical records of Mapleleaf occur within Lake Erie, Lake St. Clair, the Detroit River, and the Niagara River. In Lake Erie, Mapleleaf was found in Rondeau Bay and the area around Pelee Island. In 2015, two live animals were collected from Lake Henry on Pelee Island by the Ontario Ministry of Natural Resources and Forestry (OMNRF) (DFO, unpubl. data). These are the first known live records of the species at this location. Records from Lake St. Clair are mainly comprised of shells or single individuals. Only two records exist for the Niagara River, from 1934, while there are only three records from the Detroit River. From these scarce records, it can be assumed that Mapleleaf was fairly rare

throughout the Great Lakes and connecting channels prior to the dreissenid mussel (Zebra Mussel [*Dreissena polymorpha*] and Quagga Mussel [*D. bugensis*]) invasion. With the exception of the St. Clair River delta, the species is now believed to be extirpated from the Canadian waters of the Great Lakes and connecting channels; however, within U.S. waters, several populations were detected within drowned river mouths along the coasts of Lake Erie and Lake St Clair in 2012, with over 200 live Mapleleaf encountered (D. Zanatta, pers. comm, University of Michigan).

*Grand River:* Records of Mapleleaf in the Grand River date back to 1885, with all known records occurring in the lower 50 km of the river, between Caledonia and Port Maitland. Intensive sampling has occurred north of Caledonia; however, no Mapleleaf have been detected. It is believed that the entire distribution of Mapleleaf in the Grand River is found in this lower stretch of river.

*Hamilton Harbour:* In 2015, two live Mapleleaf were collected from Cootes Paradise in Hamilton Harbour by DFO (DFO, unpubl. data). These are the first records of the species from this location.

*Twenty Mile Creek/Jordan Harbour:* The first recorded population of Mapleleaf within the Lake Ontario watershed was discovered in Jordan Harbour, where Twenty Mile Creek enters Lake Ontario. In 2010, three fresh valves and more than 100 weathered shells were observed on the northeast shore of Jordan Harbour (T. Theysmeyer, Royal Botanical Garden, pers. obs.); however, no live specimens were observed. Further surveys in 2012 did detect the species live at several sites in the lower Twenty Mile Creek system near Jordan Station (Brumpton et al. 2013); however, further sampling is required to determine the size of this population.

*Sixteen Mile Creek:* The first recorded population of Mapleleaf within the lower Sixteen Mile Creek was reported in June 2013 when six live animals were found at two sites (S. Reid, pers. comm, OMNRF). Sampling methods used included visual, tactile and clam raking. Live animals were found upstream of coastal wetlands where no Zebra Mussel were observed in the turbid waters.

*Welland River:* Two historical records exist for Mapleleaf in the Welland River, neither of which represented a live individual. In 2008, freshwater mussel surveys were conducted in the Welland River and 25 live individuals were recorded at a site approximately 50 river kilometres upstream of the historical location, although no specimens were detected at the historical location (Morris et al. 2012). Further surveys in 2015 yielded 69 live specimens from seven sites on the Welland River as well as 101 live specimens from two sites on Oswego Creek, a tributary to the Welland River (DFO, unpubl. data).

Using data available up to 2010, Bouvier and Morris (2011) derived population estimates for extant Mapleleaf populations in Ontario (Table 2). The Great Lakes and connecting channels were not included in their estimates as Mapleleaf is believed to be extirpated from these areas. Refer to Bouvier and Morris (2011) for details on the methodology.

**Table 2.** Population estimates for extant Mapleleaf populations in Ontario, as of 2010.

\*indicates the population is represented by a single live individual; \*\*indicates that density estimates are only available from a single site, and therefore Standard Error (SE) is not available; NA – information is not available. (Table reproduced from Bouvier and Morris 2011)

Population	Average Total Unionid Density (#/m <sup>2</sup> ) (SE)	Mapleleaf Density (#/m <sup>2</sup> ) (SE)	Mapleleaf Area of Occupancy (m <sup>2</sup> )	Mapleleaf Estimated Population Size
Ausable River	2.065 (± 1.945)	0.135 (± 0.121)	712 637	9977 – 183 005
Bayfield River*	NA	NA	80 287	NA
Grand River	2.253**	0.030**	10 827 716	324 831
Jordan Harbour (Twenty Mile Creek)	NA	NA	492 747	NA
Ruscom River	NA	NA	56 719	NA
St. Clair River Delta*	NA	NA	755 799	NA
Sydenham River	5.826 (± 1.587)	0.210 (± 0.058)	5 800 645	883 191 – 1 553 783
Thames River	5.045 (± 0.748)	0.508 (± 0.187)	11 733 405	3 765 144 – 8 144 262
Welland River	NA	NA	6394	NA

The population trend for Mapleleaf is believed to be declining as it has been lost from approximately 49% of its former range in Ontario (COSEWIC 2006).

Populations of Mapleleaf were ranked by Bouvier and Morris (2011), with respect to abundance and trajectory. Population abundance and trajectory were then combined to determine the population status for populations known to exist prior to 2011 (Table 3). A certainty level was also assigned to the population status, which reflected the lowest level of certainty associated with either population abundance or trajectory. Refer to Bouvier and Morris (2011) for further details on the methodology.

**Table 3.** Abundance index, population trajectory, and population status of Mapleleaf.

Certainty associated with abundance index or population trajectory is listed as: 1=quantitative analysis; 2=standardized sampling; 3=expert opinion; certainty for population status reflects the lowest level of certainty associated with either abundance index or population trajectory. (Table modified from Bouvier and Morris 2011)

Population	Abundance Index	Certainty	Population Trajectory	Certainty	Population Status	Certainty
Ausable River	Medium	2	Unknown	3	Poor	3
Bayfield River*	Low	3	Unknown	3	Poor	3
Grand River	High	2	Unknown	3	Fair	3
Great Lakes and Connecting Channels <sup>1</sup>	Extirpated	2	-	-	Extirpated	2
Ruscom River	Medium	2	Unknown	3	Poor	3
St. Clair River Delta*	Low	1	Unknown	3	Poor	3
Sydenham River	High	1	Stable	3	Good	3
Thames River	High	1	Stable	3	Good	3
Welland River	Low	2	Unknown	3	Poor	3

\*indicates population represented by a single live individual.<sup>1</sup> Surveys in 2012 of potential coastal mussel refuges in U.S. waters of Lake Erie and Lake St. Clair indicated the presence of live Mapleleaf in several locations (D. Zanatta, pers. comm, University of Michigan); similar survey work is required in Canadian waters to further investigate the potential for remnant populations within the lower Great Lakes.

### 3.3 Needs of the Mapleleaf

#### Habitat and Biological Needs

*Spawning:* The reproductive biology of the Mapleleaf is similar to that of most unionid mussels (adapted from Clarke 1981 and Kat 1984). During spawning, males release sperm into the water and females living downstream filter the sperm out of the water with their gills. Once the ova are fertilized, they are held until they reach a larval stage called the glochidium. The female mussel then releases the glochidia, which must attach to an appropriate host fish.

The length of the brooding season for the Mapleleaf has been reported to vary with location, ranging from late spring to early summer in Canada (Clarke 1981). Mapleleaf is considered a short-term brooder (tachytictic), brooding and releasing its glochidia in the same year (COSEWIC 2006).

Many species of freshwater mussels have evolved complex host attraction strategies to increase the probability of encountering a suitable host (Zanatta and Murphy 2006). The Mapleleaf uses conglutinates (packets of glochidia) (COSEWIC 2006). These conglutinates may have markings similar to that of prey items to mislead potential host fishes.

*Encysted Glochidia Stage:* The life cycle of unionid mussels includes a larval stage that is an obligate parasite (glochidium). Most common hosts appear to be fish species, but little information on the specificity of host requirements for the Mapleleaf exists. The Channel Catfish (*Ictalurus punctatus*) has been implicated as a host fish (Schwebach et al. 2002) for Canadian populations; its distribution overlaps that of Mapleleaf in both Ontario and Manitoba (Bouvier and Morris 2011).



Glochidia will remain encysted until they metamorphose into juveniles. Attachment times for the Mapleleaf have been noted from 51 to 68 days, with temperature being a key factor in development time (Schwebach et al. 2002).

Unionids cannot complete their life cycle without access to the appropriate glochidial host. If host fish populations disappear or decline in abundance to levels below that which can sustain a mussel population, recruitment will no longer occur and the mussel species may become functionally extinct (Bogan 1993).

*Juvenile:* After metamorphosis, juveniles release themselves from the host and fall to the substrate to begin life as free-living mussels. Unionid juvenile stages generally reside buried within sediment substrates for a number of years, behaviour that most likely applies to the Mapleleaf. Juveniles residing within the sediment likely consume interstitial organic material, such as bacteria and algae (e.g., Yeager et al. 1994). They remain buried until they are sexually mature, at which point they move to the surface for the dispersal/intake of gametes (Watters et al. 2001).

*Adult:* In Canada, Mapleleaf is most commonly encountered in shallow lakes, deep river impoundments, and medium to large rivers and embayments with slow to moderate flow characteristics on firmly packed coarse gravel, sand and clay/mud mixtures (Clarke 1981; Parmalee and Bogan 1988; Watson 2000; Baitz et al. 2008). Flow does not seem to be a limiting characteristic as Mapleleaf has been found in both slow- and fast-flowing water (Bouvier and Morris 2011). Mapleleaf has also been found in mud, sand, or fine gravel substrates (DFO, unpubl. data); during recent work in the Grand River at Cayuga, Mapleleaf was found in: 0-40% boulders, 30-50% cobble, 5-55% gravel, all with some mud (Mackie et al. 2012). In the Ausable River, Mapleleaf was found exclusively at the survey station with the slowest flow characteristics (Baitz et al. 2008). Temperature tolerance is unknown but must range from near freezing to upwards of 27°C, the temperature ranges recorded in occupied Canadian rivers.

Adult Mapleleaf have very limited dispersal abilities. Although adult movement can be directed upstream or downstream, studies have found a net downstream movement through time (Balfour and Smock 1995). The primary means for large-scale dispersal, upstream movement, and the invasion of new habitat or evasion of deteriorating habitat, is limited to the encysted glochidial stage on the host fish.

Nutritional requirements of unionid mussels are poorly understood and species-specific studies on Mapleleaf food requirements are unavailable. Extrapolation from feeding studies of other freshwater mussels suggest that Mapleleaf is likely to ingest both suspended (e.g., Nichols and Garling 2000) and deposited (e.g., Raikow and Hamilton 2001) particulate organic matter, with possible selection of phytoplankton and bacteria.

**Ecological Role:** The impact of the loss of unionid mussels from streams and rivers is difficult to predict, but these animals can be important components of food web dynamics, linking and influencing multiple trophic levels (e.g., Vaughn et al. 2004; Vaughn and Spooner 2006). Vaughn et al. (2008) catalogued some of the food web and trophic influences of freshwater mussel communities on other ecosystem components. Mussels can provide habitat for other organisms by creating physical structure, and dense mussel beds can stabilize streambed substrates during periods of high flow. Unionid species influence food availability directly and indirectly through bio-deposition of organic matter and nutrient excretion. For example, the metabolic waste products of unionids can be assimilated by algae, while their pseudofeces (material that has been removed from the water column but not metabolized; Nalepa et al.

1991) are decomposed by benthic microorganism and consumed by portions of the benthic fauna. Rare species, including other unionid species, have been shown to benefit energetically from living in species-rich communities, namely the multispecies assemblages that healthy mussel communities form (Spooner 2007).

**Limiting Factors:** Factors involving reproduction and dispersal may be the most significant limiting factors for the Mapleleaf. Availability of host fish(es) suitable for glochidial attachment may inhibit unionid population growth and dispersal, and the time frame for glochidia attachment to host fish may be very limited. Effectively, large-scale dispersal is limited to the encysted glochidial stage on the host fish. Predation by fishes, mammals and birds can threaten mussel populations and in some cases may be impacting Mapleleaf populations.

## 4. Threats

### 4.1 Threat Assessment

Table 4, adapted from Bouvier and Morris (2011), provides a summary of threats to extant Mapleleaf populations in Ontario. Known and suspected threats were ranked with respect to threat likelihood and threat impact for each population. The threat likelihood and threat impact were then combined to produce an overall threat status. A certainty level was also assigned to the overall threat status, which reflected the lowest level of certainty associated with either threat likelihood or threat impact. See Bouvier and Morris (2011) for further details. Additional information is provided in the threat descriptions that follow the table.

**Table 4.** Threat levels for Mapleleaf in Ontario.

Threat Level (High, Medium, Low or Unknown) was produced from an analysis of both the Threat Likelihood and Threat Impact. The number in brackets refers to the level of certainty assigned to each Threat Level, which relates to the level of certainty associated with Threat Impact. Certainty has been classified as: 1= causative studies; 2=correlative studies; and 3=expert opinion. Gray cells indicate that the threat is not applicable to the location due to the nature of the aquatic system. Clear cells do not necessarily represent a lack of a relationship between a location and a threat; rather, they indicate that either the Threat Likelihood or Threat Impact was Unknown. (Table modified from Bouvier and Morris 2011)

Threat	Ruscom River	St. Clair River Delta	Sydenham River	Lower Thames River	Ausable River	Bayfield River	Grand River	Jordan Harbour	Welland River
<b>Invasive Species</b>	High (2)	High (2)	Medium (2)	High (2)	Medium (2)	Medium (2)	High (2)	High (2)	Medium (2)
<b>Turbidity and Sediment Loading</b>	Medium (3)	Low (3)	Medium (3)	Medium (3)	Medium (3)	Medium (3)	Medium (2)	Medium (3)	Medium (3)
<b>Contaminants and Toxic Substances</b>	High (3)	High (3)	High (3)	High (3)	High (3)	High (3)	High (2)	High (3)	High (3)
<b>Nutrient Loading</b>	Medium (3)	Low (3)	Medium (3)	Medium (3)	Medium (3)	Medium (3)	Medium (2)	Medium (3)	Medium (3)
<b>Altered Flow Regimes</b>	Medium (3)		Medium (3)	Medium (3)	Medium (3)	High (3)	Medium (2)		Low (3)
<b>Habitat Removal and Alterations</b>	High (3)	Medium (3)	High (3)	High (3)	Medium (3)	Medium (3)	High (2)	Medium (3)	Medium (3)
<b>Disruption of Host Fish(es)</b>	Medium (3)	Medium (3)	Medium (3)	Medium (3)	Medium (2)	Medium (3)	High (3)	Medium (3)	Medium (3)
<b>Predation and Harvesting</b>	Unknown (3)	Low (3)	Low (3)	Low (3)	Low (3)	Low (3)	Low (3)	Low (3)	Low (3)
<b>Recreational Activities</b>	Unknown (3)	Low (3)	Low (3)	Low (3)	Low (3)	Low (3)	Low (3)	Low (3)	Low (3)

**N.B.** The Threat Level represents a combination of the **current** Threat Impact (i.e., not potential impact) and Threat Likelihood at a location.

## 4.2 Description of Threats

The following brief descriptions emphasize the principal threats currently acting on Mapleleaf populations throughout Ontario. Much of the information has been summarized from Bouvier and Morris (2011).

**Invasive Species:** Invasive dreissenid mussels have had a profound impact on native freshwater mussel communities in Canada (e.g., Ricciardi et al. 1998). Direct attachment by Zebra and Quagga mussels on unionids can lead to interference of feeding, locomotion, respiration, and excretion (e.g., Haag et al. 1993; Schloesser et al. 1996). The apparent loss of Mapleleaf from the Canadian waters of lakes Erie and St. Clair and the Niagara and Detroit rivers is believed to be directly related to the invasion of dreissenid mussels within these systems, starting in the mid to late 1980s (COSEWIC 2006). Dreissenid mussels also threaten and limit the distribution of freshwater mussels in the St. Clair River delta (Metcalf-Smith et al. 2007a).

Dreissenid mussels rely on passive dispersal of their larvae, and are therefore generally unable to move upstream, unlike unionid mussels that employ fish hosts to facilitate upstream dispersal (Mackie 1991). For this reason, dreissenid mussels pose an important threat to the lacustrine habitat of native freshwater mussels. However, Zebra Mussel could also pose a threat to riverine mussel populations if it were to become established in reservoirs (Bouvier and Morris 2011). Zebra Mussel has been reported in two reservoirs on the Thames River (Upper Thames River Conservation Authority 2003), and throughout the lower Thames River from Fanshawe Reservoir to the mouth of the river (Morris and Edwards 2007). Freshwater mussel populations in the Grand River are highly susceptible to Zebra Mussel, as the Grand River is heavily impounded. Infestation by Zebra Mussel of the Luther, Belwood, Guelph, or Conestogo reservoirs could have a significant impact on the freshwater mussel populations (Metcalf-Smith et al. 2000b). However, it should be noted that there is some evidence to suggest that Mapleleaf in the lower Grand River exposed to Zebra Mussel (near Port Maitland) appear to survive infestation as demonstrated by the presence of live individuals covered in byssal threads (S. Staton, DFO, pers. comm.). Further research in a coastal wetland of Lake Erie has suggested that large molluscivorous fishes (e.g., Common Carp [*Cyprinus carpio*], Freshwater Drum [*Aplodinotus grunniens*], and Channel Catfish) can be effective predators of Zebra Mussel attached directly to Mapleleaf (Bowers and de Szalay 2007).

Additionally, Common Carp and Round Goby (*Neogobius melanostomus*) may pose a threat to some populations by increasing turbidity and reducing host fish species, respectively. Other potentially deleterious relationships to invasive species require further investigation.

**Turbidity and Sediment Loading:** Increased rates of siltation can result in impairment of oxygen intake, feeding and reproductive functions as well as physical smothering, of which the young are particularly at risk. Vulnerability to siltation varies among unionids; susceptibility of the Mapleleaf is unknown.

Agricultural practices that may result in increased siltation rates include allowing livestock access to streams, which can result in streambank instability; installation of tile drainage systems; and, clearing of riparian vegetation. Erosion due to poor agricultural practices can result in siltation and shifting substrates that can smother mussels.

Over 85% of the Sydenham River watershed is agricultural land (Dextrase et al. 2003). Suspended solids have been reported as high as 900 mg/L in the Sydenham River (Dextrase et

al. 2003), a level that would negatively impact freshwater mussel populations (Bouvier and Morris 2011). Over 88% of land in the lower Thames River is used for agricultural purposes (Taylor et al. 2004). The lower Thames River is considered to be highly turbid (COSEWIC 2006). Increased agricultural pressure (from 68% in 1976 to 75% in 1998) has affected water quality in the Grand River, resulting in increased turbidity and sediment loads; however, it is the species found in the lower Grand River, such as Mapleleaf, that are mainly affected (COSEWIC 2006; Bouvier and Morris 2011). The presence of a low head dam near the mouth of the river at Dunnville is also known to contribute to degraded (e.g., high nutrient levels and low oxygen), highly turbid conditions within the lower 30 km reach of the Grand River where Mapleleaf is found (MacDougall and Ryan 2012). The St. Clair River delta is considered to be less affected by this threat, as it is afforded some protections by the Walpole Island First Nation Territory (e.g., access restrictions).

The Ausable River watershed has been drastically altered and it is estimated that by 1983, 85% of the land in this watershed had been converted from forest and lowland vegetation to agricultural land, and that 70% of the land is now in tile drainage (Nelson et al. 2003).

**Contaminants and Toxic Substances:** Freshwater mussels are among the most sensitive aquatic organisms to environmental contaminants (e.g., Goudreau et al. 1993; Mummert et al. 2003). As benthic filter-feeders, mussels are exposed to any contaminants found in both the dissolved phase (i.e., in the water column) and those associated with the sediment (both suspended and settled). Juvenile freshwater mussels remain buried in the sediment for the first few years of life where they feed exclusively on particles in the interstitial water. Such behaviour may increase their exposure to sediment-bound contaminants during this sensitive early life stage (Yeager et al. 1994), which could have implications for the survival of species that are especially sensitive to toxic chemicals.

Contaminants can enter Mapleleaf habitat in a variety of ways, including, but not limited to, agricultural and road run-off, and industrial and storm sewer discharges. A wide variety of contaminants may enter mussel habitat including pesticides, road salts, hydrocarbons, and heavy metals. Recent studies on the impacts of pesticides on juvenile mussels and glochidia indicate that Unionidae are relatively sensitive to pesticides (e.g., Bringolf et al. 2007). Unionids appear to be especially susceptible to ammonia and copper, particularly the glochidial and juvenile stages (e.g., Mummert et al. 2003; Gillis et al. 2008); potassium is also a concern (see Morris et al. 2008) as well as salinity (Gillis 2011).

Gillis (2011) has shown that glochidia of the Wavyrayed Lampmussel (*Lampsilis fasciola*) were acutely sensitive to sodium chloride. Assuming that the salt sensitivity of the Mapleleaf is comparable to that of the Wavyrayed Lampmussel, chloride from road salt is a substantial threat to the early life stages; the range of both species is limited to southern Ontario, Canada's most road-dense and thus heavily salted region. While natural water does buffer the toxic effects of chloride to the glochidia, chloride levels in mussel habitat have been reported at levels (>1300 mg/L) that are toxic to the Wavyrayed Lampmussel (Gillis 2011). Although federal water quality guidelines for the protection of aquatic life have been set at 120 mg/L for chronic exposure to chloride, this guideline may not be sufficiently protective of glochidia of some species at risk mussels in southern Ontario (Canadian Council of Ministers of the Environment [CCME] 2011). Further work by Todd and Kaltenecker (2012) suggested that long-term road salt use is contributing to increases in baseline chloride concentrations in at-risk mussel habitats in southern Ontario that may affect recruitment of at-risk mussel populations; Mapleleaf is found in many of these habitats.

Many forms of pollution resulting from human encroachment, such as residential and urban development, into Mapleleaf habitat may be present (e.g., run-off of lawn fertilizers and pesticides, road salts, and heavy metals from industrial sources) (e.g., Pip 1995, 2006). Exposure to municipal wastewater effluent can negatively affect unionid health (e.g., Gagné et al. 2004; Gagnon et al. 2006). Pharmaceuticals can enter streams, rivers and lakes, largely via effluent from sewage treatment plants. There is an increasing concern of possible endocrine and reproductive effects from these chemicals on aquatic biota. Related work with unionids is in its infancy (see Cope et al. 2008), but there is reason for concern as significant effects on freshwater fish communities have been demonstrated (Kidd et al. 2007); in the Grand River, recent work by Tetreault et al. (2011) have documented feminization of some fishes.

Freshwater mussels in the Grand River are subjected to anthropogenic stressors, such as sewage pollution, below the urban centres (Mackie 1996). The Grand River watershed has a population of approximately 780 000 people and is expected to increase by nearly 40% over the next 20 years (COSEWIC 2006). As such, wastewater discharge is a major input in these urban areas and is expected to increase with increasing population. A recent study that assessed the cumulative impacts of urban runoff and municipal wastewater effluent on freshwater mussels in the Grand River concluded that chronic exposure to multiple contaminants (e.g., ammonia, chloride and metals such as copper, lead, and zinc) contributed to the decline of mussel populations in this watershed (Gillis 2012); the author also confirmed this negative impact through a follow up study that revealed the existence of a 'dead zone' immediately downstream of one wastewater treatment plant outfall near Kitchener where no live mussels were detected for several kilometres (Gillis et al. in press). The negative impacts of wastewater treatment plants on mussel populations has also been reported in other regions (Goudreau et al. 1993).

In the Thames River watershed, mean ammonia concentrations exceed federal guidelines in all sub-basins (Morris et al. 2008), while mean concentrations of copper exceed guidelines in several sub-basins (Metcalf-Smith et al. 2000a).

In the Welland River watershed, recent research has indicated the presence of highly elevated levels of per- and poly-fluorinated compounds (e.g., PFOS) in biota within Lake Niapenco in the upper watershed, with the source of the contamination attributed to the Hamilton airport upstream (de Solla et al. 2011). This contamination by fluorinated compounds is of concern for Mapleleaf (as well as other freshwater mussels) found further downstream in the Welland River as recent laboratory results have indicated that the brooding glochidia of some mussel species are highly sensitive to such contaminants and are among the most sensitive organisms tested to date (Hazelton et al. 2012).

**Nutrient Loading:** The primary concern of nutrient loadings in Mapleleaf habitat relates to eutrophication effects, namely algal blooms that can result in oxygen depletion and algal toxins. Additionally, freshwater mussels, particularly juvenile stages, may be sensitive to ammonia (e.g., Newton et al. 2003; Newton and Bartsch 2007). A negative correlation was found between concentrations of phosphorus and nitrogen and Wavyrayed Lampmussel abundance in a variety of southwestern Ontario streams (Morris et al. 2008).

The potential for run-off of fertilizer must be considered where agriculture is present. Accidental spills that have the potential to reduce dissolved oxygen (DO) can negatively influence unionid populations (Tetzloff 2001). The Thames River exhibits some of the highest phosphorus and nitrogen loadings found in the Great Lakes basin (Water Quality Branch [WQB] 1989). In particular, the lower Thames River is heavily impacted by agricultural activities. Phosphorus levels exceeding the provincial water quality objectives are often found in the Sydenham River

(Dextrase et al. 2003), and concentrations of total phosphorus associated with agricultural runoff in the east branch are increasing, affecting Mapleleaf (COSEWIC 2006). In the Ausable River, total phosphorus levels are often above the provincial water quality objective and nitrate levels also exceed guidelines (COSEWIC 2006).

**Altered Flow Regimes:** Many biotic and abiotic effects of impounded rivers can influence unionid mussel communities, including the potential elimination of host fish(es) from upper reaches of river systems, alteration of flow and thermal characteristics, and the potential to create reservoirs with retention times suitable for the colonization of invasive species, such as dreissenid mussels. High flow conditions may result in dislodgement of adults and disruption of larval forms, while low flow can lead to low DO, silt accumulation, elevated temperatures and, at the extreme, desiccation. Freshwater mussels are particularly vulnerable to reductions in water depth as they are frequently found in very shallow water (10–20 cm) (Metcalf-Smith et al. 2007b). A significant negative correlation between mean annual stream flow and growth of a variety of freshwater mussel species has been demonstrated (Rypel et al. 2008), indicating the profound role impoundments and artificial flow manipulation may have on freshwater mussel assemblages.

There are a total of 173 water control structures (e.g., dams and weirs) in the upper Thames River watershed and 65 in the lower Thames watershed below the city of London (COSEWIC 2006). However, the lower Thames River is one of the largest free-flowing river systems in southern Ontario, with no major barriers or dams for approximately 200 km from the mouth of the river upstream to the first dam at Springbank Park in the city of London (COSEWIC 2008); although only seasonal, this dam has not been in operation for the past several years. Within the lower Grand River, the low head dam near the mouth of the river at Dunnville has a profound effect on flow and habitat conditions including sediment transport and connectivity to Lake Erie (MacDougall and Ryan 2012). Recent genetic research also suggests that the dam has resulted in genetic isolation for Mapleleaf occurring upstream within the impounded reaches of the lower Grand (D. Zanatta, University of Michigan, unpublished data).

**Habitat Removal and Alterations:** Destruction of habitat through dredging, ditching, and other forms of channelization, including measures that result in flow reduction, and practices that result in the diversion of cool or cold water into Mapleleaf habitat, may impact this species (e.g., through interference with reproductive timing). River channel modifications, such as dredging, can result in the direct destruction of mussel habitat and lead to siltation and sand accumulation of local and downstream mussel beds. The construction of impoundments can lead to the fragmentation of habitat, altered water levels, habitat conversion, and the clearing of riparian zones, resulting in the loss of cover, increased rates of siltation and thermal shifts. These are all factors that can be deleterious to the survival of Mapleleaf in areas under development.

**Disruption of Host Fish(es):** Any factors that directly or indirectly affect host fish abundances and distributions will impact Mapleleaf distributions. Unionids cannot complete their life cycle without access to the appropriate glochidial host. If host fish populations disappear or decline in abundance to levels below that which can sustain a mussel population, recruitment will no longer occur and the mussel species may become functionally extinct (functionally extinct in this case is defined as a population that is no longer viable, as a crucial part of their life cycle [in this case the host fish] has been removed) (Bogan 1993).

The likely host fish for Mapleleaf in Canada (based on research in the U.S.) is the Channel Catfish, which is considered to be a common species in Ontario (COSEWIC 2006). Therefore, the fish-mussel host interaction is not thought to be limiting the presence of Mapleleaf

throughout its range in Ontario (Bouvier and Morris 2011). Although the Flathead Catfish (*Pylodictis olivaris*) also acts as a host for Mapleleaf in the U.S., this species does not occur in Canada.

**Predation and Harvesting:** Freshwater mussels are known to be food sources for a variety of mammals and fishes (Fuller 1974). There have been several studies of Muskrat predation on freshwater mussels (Neves and Odom 1989; Tyrrell and Hornbach 1998), but these studies were not conducted in areas that support populations of Mapleleaf. There is little information on the direct impact of predation on Canadian freshwater mussels; however, it is thought that the impact would be quite low (Bouvier and Morris 2011).

Harvesting mussels for human consumption could be a potential concern; however, to date, there are no reports of the harvest of Mapleleaf for human consumption (Bouvier and Morris 2011). Poaching of unionid mussels is suspected but unknown in its intensity or occurrence.

**Recreational Activities:** Recreational activities that may impact mussel beds include (Bouvier and Morris 2011):

- Driving all-terrain vehicles (ATVs) through river beds – this has been identified as a threat in the Thames and Sydenham rivers.
- Propellers on recreational boats and jet skis – propeller channels have been noted through the mussel beds in the St. Clair River delta.
- Paddling action disturbance (kayaks, etc.) of the mussel bed.



## 5. Population and Distribution Objectives

The long-term recovery goal (>20 years) for Mapleleaf in Ontario is to assist the recovery of the species by:

1. Protecting existing populations to prevent further declines;
2. Restoring degraded populations to healthy, self-sustaining levels by improving the extent and quality of habitat (where feasible).

The population and distribution objectives (to support the recovery goal) for Mapleleaf in Ontario are to return or maintain self-sustaining populations in the following locations where live animals currently exist:

1. Ausable River
2. Sydenham River (including the North Sydenham River and Bear Creek)
3. Thames River (including McGregor and Baptiste creeks)
4. Ruscom River
5. Grand River
6. Welland River
7. Twenty Mile Creek/Jordan Harbour
8. Sixteen Mile Creek

The population and distribution objectives would be met when the populations at these locations demonstrate active signs of reproduction and recruitment throughout their known distribution at each location (further details will be informed through the implementation of a monitoring program – see Table 5, 5a). In addition, ‘recovered’ populations would need to be stable or increasing and demonstrably secure with low risk from known threats.

The Great Lakes and connecting channels are currently excluded from the recovery goal as these areas have been devastated by dreissenid mussels and no longer provide suitable conditions for freshwater mussels (DFO 2011b). However, with recent surveys detecting the presence of live Mapleleaf from drowned river mouths along the U.S. coast of Lake Erie and Lake St. Clair, more survey work is required to determine if remnant populations may persist within Canadian waters of these lakes. More quantifiable objectives (that may include consideration of extirpated populations where suitable habitats may be present) will be developed once necessary surveys and studies have been completed (refer to Section 7.5 Schedule of Studies to Identify Critical Habitat).

**Rationale:** Little is known about Mapleleaf in Ontario and much research and monitoring is required before the population and distribution objectives can be refined. Population demographics (extent, abundance, trajectories and targets) are known for some populations but not others. With only a single live animal detected in the Bayfield River and St. Clair River delta, these locations in particular require further work to clarify their possible role in the recovery of the species within Ontario.

## 6. Broad Strategies and Recovery Actions

**Recommended Scale for Recovery:** Currently, a single-species recovery strategy (and action plan) is best suited for Mapleleaf in Ontario. Although its range and distribution overlaps with

other SARA-listed mussel species in some watersheds, it also occurs in watersheds where other mussel species at risk do not occur (e.g., Welland River, Twenty Mile Creek, Sixteen Mile Creek and Ruscom River). The remaining Mapleleaf populations in Ontario are found within the range of existing multi-species and ecosystem-based recovery strategies or action plans (see Section 6.1 Actions Already Completed or Currently Underway). It is expected that Mapleleaf will receive substantial benefit from these complementary recovery initiatives.

## 6.1 Actions Already Completed or Currently Underway

Single and multi-species recovery strategies have been drafted previously for several freshwater mussel species whose distributions partly overlap with Mapleleaf. Recovery teams for these species are currently engaged in the implementation of recovery actions within these watersheds that will benefit Mapleleaf and include:

- Recovery Strategy for the Northern Riffleshell, Snuffbox, Round Pigtoe, Salamander Mussel and Rayed Bean in Canada (DFO 2018b)
- Recovery Strategy for the Round Hickorynut (*Obovaria subrotunda*) and the Kidneyshell (*Ptychobranhus fasciolaris*) in Canada (DFO 2013)
- Recovery Strategy for the Wavy-rayed Lampmussel (*Lampsilis fasciola*) in Canada (Morris 2006)

Ecosystem-based recovery documents that overlap with Mapleleaf include:

- *Sydenham River Action Plan*: This action plan is a multi-species, ecosystem-based plan that addresses the needs of seven freshwater mussels as well as two species of fishes – the Eastern Sand Darter (*Ammocrypta pellucida*) and Northern Madtom (*Noturus stigmosus*) (DFO 2018a). The plan builds on the recovery program established ten years earlier by the Sydenham River Recovery Team (Dextrase et al. 2003); it targets stewardship actions for maximum effectiveness in threat mitigation at the landscape level to recover multiple aquatic species at risk that share similar threats and habitat. A network of monitoring sites for mussel species at risk was established in 2003 (see Metcalfe-Smith et al. 2007b).
- *Ausable River Ecosystem Recovery Strategy* (Ausable River Recovery Team 2006): Stewardship efforts are ongoing and a monitoring program to track the recovery of endangered freshwater mussels in the Ausable River has been established (Baitz et al. 2008).
- *Thames River Ecosystem Recovery Strategy*: The goal of the strategy is to develop “a recovery plan that improves the status of all aquatic species at risk in the Thames River through an ecosystem approach that sustains and enhances all native aquatic communities” (Thames River Recovery Team 2005). This recovery strategy addresses 25 COSEWIC-designated species, including seven mussels, 12 fishes, and six reptiles. Following the lead of the Sydenham Recovery Team, mussel monitoring stations have been established in the Thames River as well.
- *Grand River Fish Species at Risk Recovery Strategy* (Portt et al. 2007): While this recovery strategy deals specifically with fish species, many of the same threats apply to Mapleleaf, such as the impacts of sediment and nutrient loadings and invasive species.
- *Walpole Island Ecosystem Recovery Strategy*: The Walpole Island Ecosystem Recovery Strategy Team was established in 2001 to develop an ecosystem-based recovery

strategy for the area containing the St. Clair River delta, with the goal of outlining steps to maintain or rehabilitate the ecosystem and species at risk (Walpole Island Heritage Centre 2002). Although the strategy is initially focusing on terrestrial ecosystems, there are future plans to include aquatic components of the ecosystem.

Conservation authorities (e.g., Lower Thames Valley, Upper Thames River, St. Clair Region, Ausable-Bayfield, and Grand River) continue to play a vital role in stewardship and public education programs that have resulted in increased awareness of species at risk and improvements to habitat and water quality throughout Mapleleaf's range in Ontario.

## **6.2 Recovery and Action Planning**

Three broad strategies were recommended to address threats to the species and habitat as well as to meet the population and distribution objectives: 1) Research and Monitoring; 2) Management and Coordination; and, 3) Communication and Outreach. Approaches are identified for each of the broad strategies. These approaches or activities are further divided into numbered recovery measures with priority ranking (high, medium, low), identification of the threat(s) addressed, and an associated timeline (Tables 5 and 6). Table 5 identifies the measures to be undertaken by DFO to support the recovery of Mapleleaf; Table 6 identifies the measures to be undertaken collaboratively between DFO and its partners, other agencies, organizations or individuals. Implementation of these measures will be dependent on a collaborative approach, in which DFO is a partner in recovery efforts, but cannot implement the measures alone. More detailed narrative for some recovery measures is included after the tables (Section 6.3). It should be noted that many of the activities identified in Tables 5 and 6 meet the requirements of SARA, subsection 49(1)(d) (i.e., research and management activities needed to meet the population and distribution objectives as well as measures to monitor the recovery of the species and its long term viability).

Implementation of these measures will be accomplished in coordination with relevant ecosystem-based recovery teams, First Nations, and other organizations. Of the broad strategies, higher priority will be given to the research and monitoring measures, as these data will be used to inform the other two strategies (i.e., management and coordination, and communication and outreach).

**Table 5.** Measures for the recovery of Mapleleaf to be undertaken by Fisheries and Oceans Canada.

#	Recovery Measures	Priority	Threats Addressed	Timeline
<b>Broad Strategy: Research and Monitoring</b>				
<b>Approach: Research and Monitoring - Inventory</b>				
1(a)	Conduct further surveys within the historical distribution of Mapleleaf to determine extent, abundance and demographics of known populations in Ontario.	High	All	2018-2020
1(b)	Conduct surveys of rivers where uncertainty of Mapleleaf persistence exists (e.g., Bayfield River).	Medium	All	2018-2020
<b>Approach: Research - Habitat Requirements</b>				
2	Determine habitat requirements of all life stages of the Mapleleaf.	High	All	2019-2021
<b>Approach: Monitoring - Host Fish Populations</b>				
3(a)	Identify/confirm functional host fish species for Mapleleaf.	Medium	Disruption of Host Fish(es)	2018-2020
3(b)	Determine the distribution and abundance of the identified host fish(es).	Medium	Disruption of Host Fish(es)	2020-2021
<b>Approach: Monitoring - Populations and Habitat</b>				
4(a)	Establish long-term quantitative surveys to monitor changes in the distribution and abundance of extant populations of Mapleleaf populations and invasive species (e.g., dreissenid mussels).	High	Invasive Species	2020-2021
4(b)	Establish stations to monitor changes to the habitat of Mapleleaf. This monitoring will complement and be integrated into the long-term monitoring program.	High	All Habitat Threats <sup>3</sup>	2020-2021
<b>Approach: Research and Threat Evaluation – Habitat Requirements</b>				
5(a)	Evaluate threats to habitat for all extant populations to guide local stewardship programs to improve conditions within critical habitat and other occupied	High	All Habitat Threats	2018-2020

<sup>3</sup> Habitat threats include: turbidity and sediment loading, contaminants and toxic substances, nutrient loading, and altered flow regimes.

#	Recovery Measures	Priority	Threats Addressed	Timeline
	habitats.			
5(b)	Determine the sensitivity of early life stages of the Mapleleaf to environmental contaminants that populations may be exposed to.	High	Contaminants and Toxic Substances	2020-2021
<b>Broad Strategy: Management and Coordination</b>				
<b>Approach: Coordination of Activities</b>				
6	Promote and enhance expertise in freshwater mussel identification, biology, ecology and conservation.	Medium	All	On-going
7	Work with ecosystem recovery teams and other relevant groups (e.g., conservation authorities, stewardship groups and First Nations) to aid in the implementation of recovery actions.	High	All	On-going
<b>Broad Strategy: Communication and Outreach</b>				
<b>Approach: Communication and Outreach</b>				
12	Encourage public support and participation in mussel recovery by developing awareness materials and programs. Will encourage participation in local stewardship programs to improve and protect habitat for Mapleleaf.	Medium	All	2018-2021
13	Hold mussel identification workshop that incorporates identification, biology, ecology, threats, and conservation of freshwater mussel species in Ontario over a two-day workshop.	High	All	On-going

**Table 6.** Measures for the recovery of Mapleleaf to be undertaken collaboratively between Fisheries and Oceans Canada and its partners.

#	Recovery Measures	Priority	Threats Addressed	Timeline (Short, Medium or Long Term)	Potential Partnerships
<b>Broad Strategy: Management and Coordination</b>					
<b>Approach: Co-ordination of Activities</b>					
8	Implement local stewardship programs to improve habitat conditions and reduce threats within critical habitat and other occupied habitats. Priorities and mitigation approaches to be informed through threat evaluation research.	High	All	Long Term	DFO, Conservation Authorities*
9(a)	Work with municipal planning authorities so that they consider the protection of critical habitat for Mapleleaf within official plans.	High	All	Medium – Long Term	DFO, Municipal and County Planning Departments, Conservation Ontario
9(b)	Support the development and implementation of legislation and policies at all levels of government that will aid in the protection and recovery of existing populations. Facilitate distribution and habitat information to planning agencies, public land managers, permitting organizations and others involved in decision making.	Low	All	Long Term	All levels of government (including DFO)
<b>Broad Strategy: Communication and Outreach</b>					
<b>Approach: Communication and Outreach</b>					
10	Development of an overall communications plan to increase awareness and support for the protection and recovery of the Mapleleaf. This communications plan will provide direction and coordination for all communications and outreach activities related to the species.	Medium	All	Medium	DFO, Conservation Authorities*
11	Increase awareness within the angling community about the role of host fish(es) for the Mapleleaf to reduce the possible risks of harvesting host fish(es) during the encystment phase.	Low	Disruption of Host Fish(es)	Medium – Long Term	DFO, Conservation Authorities*, angling groups

\*Conservation Authorities may include one or more of the following organizations that cover watersheds where Mapleleaf currently occurs: Ausable-Bayfield Conservation Authority, St. Clair Region Conservation Authority, Lower Thames Valley Conservation Authority, Upper Thames River Conservation Authority Essex Region Conservation Authority, Grand River Conservation Authority, and Niagara Region Conservation Authority.

### 6.3 Narrative to Support the Recovery Planning and Implementation Tables

- 1 (a-b): Further surveys are required to confirm the current distribution and abundance of Mapleleaf in Ontario. Additional sampling effort is also required to determine if remnant populations may persist in river mouths and coastal wetland habitats of lakes Erie and St. Clair (as populations were detected in 2012 in U.S. waters). Sampling methods to determine density and demographic information need to be quantitative (i.e., include the excavation of defined quadrats) and could be informed by the work of Metcalfe-Smith et al. (2007b). A thorough understanding of all extant populations is necessary for the refinement of critical habitat as well as to inform effective recovery actions.
- 2: Research to better understand the differences in habitat for all life stages of Mapleleaf will help further refine the identification of critical habitat. The identification of critical habitat is a legal requirement under SARA and will facilitate protection of Mapleleaf populations.
- 3 (a-b): To determine if Mapleleaf is host limited, it is necessary to first confirm the functional host fish(es) (currently thought to be Channel Catfish). Once the host(s) of Mapleleaf in Ontario have been identified, it is necessary to determine the distribution, abundance, and health of the host species.
- 4 (a-b): A network of monitoring stations should be established throughout the current range of Mapleleaf similar to that developed for freshwater mussels within the Sydenham River for riverine habitats (Metcalfe-Smith et al. 2007b); some monitoring stations using these methods have more recently been established in the Ausable, Grand, and Thames rivers. Mussel monitoring methods need to be developed that can be adapted to lake and wetland habitats where Mapleleaf is also found (e.g., Jordan Harbour, lower Grand River within impounded reaches). The results of the monitoring program will allow for assessment of the progress made towards achieving the population and distribution objectives. As for other at-risk mussel species, monitoring sites should be established in a manner so as to permit:
  - Quantitative tracking of changes in mussel abundance and demographics (size, age, sex), or that of their hosts;
  - Detailed analysis of habitat use and the ability to track changes in the use or availability; and,
  - The ability to detect and track invasive species; additional monitoring stations should be set up in areas where there is a likely source location for establishment of dreissenid mussels (e.g., reservoirs) to permit early detection.
- 5 (a): Although some preliminary work has been done on evaluating threats for some populations (refer to Section 4), little is known regarding threats to other populations (e.g., for recently discovered populations within the Welland River and Twenty Mile Creek/Jordan Harbour). More comprehensive threat evaluations for all extant populations will help inform stewardship programs to ensure the most efficient and effective use of limited resources while promoting an 'ecosystem approach' when warranted.
- 5(b): Some initial research has been completed on selected contaminants for early life stages of freshwater mussels, including chloride, ammonia and copper. However, further work is required that is specific to the Mapleleaf (e.g., PFOS contamination is known from the upper Welland River and may be impacting downstream populations).

- 6: Expertise in freshwater mussel identification, distribution, life history, and genetics is limited to a small number of biologists in Ontario. This capacity could be increased by training personnel (both within government as well as non-government organizations and First Nations groups with a conservation focus) and encouraging graduate and post-graduate research directed towards the conservation of freshwater mussels. Such efforts would enhance partnering opportunities to implement recovery measures for freshwater mussels.
- 7-8: Many of the threats affecting Mapleleaf populations are similar to those that affect other fish and mussel species at risk. Therefore, efforts to remediate these threats should be done in close connection with ecosystem recovery teams (e.g., for Ausable, Grand, Sydenham, and Thames rivers) and other relevant groups to eliminate duplication of efforts. Once threats have been evaluated for extant populations, the results will inform local stewardship programs for threat mitigation. As with other mussels, measures to improve habitat for Mapleleaf include stewardship actions involving Best Management Practices (BMPs) for agricultural properties (Agriculture Canada and OMAFRA 1992-2011) and residential properties (School of Environmental Design and Rural Development 2007) within watersheds where critical habitat has been identified.
- 10: A communications plan to increase awareness and support for the protection and recovery of Mapleleaf will provide overall direction for all outreach activities (i.e., measures 11-13).
- 12-13: Increasing freshwater mussel knowledge and identification can be assisted through the development of awareness material, such as the *Photo Field Guide to the Freshwater Mussels of Ontario* (Metcalf-Smith et al. 2005) and the recently completed identification “app” *Canadian Freshwater Mussel Guide*, now available for free download from iTunes. In addition, an annual, hands-on mussel identification workshop is offered by DFO to government, agency, non-government organizations, Aboriginal peoples and the public. Increased public knowledge and understanding of the importance of Mapleleaf, and mussels in general, will play a key role in the recovery of this species.



## 7. Critical Habitat

### 7.1 General Identification of Critical Habitat for the Mapleleaf

The identification of critical habitat for Threatened and Endangered species (on Schedule 1) is a requirement of SARA. Once identified, SARA includes provisions to prevent the destruction of critical habitat. Critical habitat is defined under section 2(1) of SARA as:

*“...the habitat necessary for the survival or recovery of a listed wildlife species and that is identified as the species’ critical habitat in the recovery strategy or in an action plan for the species”.* [s. 2(1)]

SARA defines habitat for aquatic species at risk as:

*“... spawning grounds and nursery, rearing, food supply, migration and any other areas on which aquatic species depend directly or indirectly in order to carry out their life processes, or areas where aquatic species formerly occurred and have the potential to be reintroduced.”* [s. 2(1)]

Critical habitat for Mapleleaf has been identified to the extent possible, using the best information currently available. The critical habitat identified in this recovery strategy and action plan describes the geospatial areas that contain the habitat necessary for the survival or recovery of the species. The current areas identified may be insufficient to achieve the population and distribution objectives for the species. As such, a schedule of studies has been included to further refine the description of critical habitat (in terms of its biophysical functions/features/attributes as well as its spatial extent) to support its protection.

### 7.2 Information and Methods Used to Identify Critical Habitat

Using the best available information, critical habitat has been identified using a ‘bounding box’ approach for extant populations of Mapleleaf in the Ausable, Sydenham, Thames, Ruscom, Grand, and Welland rivers as well as Jordan Harbour/Twenty Mile Creek and Sixteen Mile Creek; additional areas of potential critical habitat within the St. Clair River delta region will be considered in collaboration with Walpole Island First Nation if supported by the results of further surveys.

This approach requires the use of essential functions, features, and attributes for each life stage of this species to identify patches of critical habitat within the ‘bounding box’, which is defined by occupancy data for the species. Life-stage habitat information was summarized in chart form using available data and studies referred to in Sections 3.3 (Needs of the Mapleleaf). The ‘bounding box’ approach was the most appropriate, given the limited information available for this species and the lack of detailed habitat mapping for these areas. This approach and the methods used to identify reaches of critical habitat are consistent with the approaches recommended by DFO (2011a) for freshwater mussels.

Within the rivers currently occupied by Mapleleaf, an ecological classification system was used in the identification of critical habitat. The OMNRF’s Aquatic Landscape Inventory System (ALIS version 1) (Stanfield and Kuyvenhoven 2005) was used as the base unit for defining reaches within riverine systems. The ALIS system employs a valley classification approach to

define river segments with similar habitat and continuity on the basis of hydrography, surficial geology, slope, position, upstream drainage area, climate, landcover and the presence of instream barriers, all of which are believed to have a controlling effect on the biotic and physical processes within the catchment. Therefore, if the species has been found in one part of the ecological classification, it would be reasonable to expect that it would be present in other spatially contiguous areas of the same valley segment. Within all identified river segments (i.e., valley segments), the width of the habitat zone is defined as the area from the mid-channel point to bankfull width on both the left and right banks. Critical habitat for Mapleleaf was therefore identified as the reach of river that includes all contiguous ALIS segments from the uppermost stream segment with the species present to the lowermost stream segment with the species present; segments or reaches were excluded only when supported by robust data indicating the species absence and/or unsuitable habitat conditions. Current occupancy for this species was defined by recent records of live individuals (and/or fresh shells) from 1996 onward; this is the point in time when systematic surveys of freshwater mussel communities in southern Ontario began. Unoccupied ALIS segments with suitable habitats were also included when limited sampling had occurred (i.e., the species was assumed to be present).

### **7.3 Identification of Critical Habitat: Biophysical Functions, Features, and Their Attributes**

Table 7 summarizes the limited available knowledge of the functions, features, and attributes for each life stage of the Mapleleaf (refer to Section 3.3 Needs of the Mapleleaf for full references). Areas within which critical habitat is found must be capable of supporting one or more of these habitat functions. *Note that not all attributes in Table 7 must be present for a feature to be identified as critical habitat.* If the features, as described in Table 7, are present and capable of supporting the associated functions, the feature is considered critical habitat for the species, even though some of the associated attributes might be outside of the range indicated in the table. All attributes may be used to help inform management decisions for the recovery and/or protection of habitat.

**Table 7.** Essential functions, features, and attributes of critical habitat for each life stage of the Mapleleaf.

Life Stage	Function	Feature(s)	Attribute(s)*
Spawning and fertilization (time period unknown)  Glochidia present in females from late spring to summer (short-term brooder)	Reproduction	Wetlands and reaches of medium to large rivers and streams with slow to fast flow characteristics and substrates suitable for burrowing (excluding areas of bedrock and hardpan clay)  (includes 'bankfull channel' <sup>4</sup> )	<ul style="list-style-type: none"> <li>• Attributes assumed to be same as for adults (see below).</li> <li>• Flow typically present (distribution of sperm).</li> <li>• Contaminants levels below the following thresholds: <ul style="list-style-type: none"> <li>• Long term chloride levels &lt; 120 mg/L (CCME 2011).</li> <li>• Mean concentrations of &lt; 0.3 mg/L total ammonia as N at pH 8; for protection of all life stages of freshwater mussels (Augspurger et al. 2003).</li> </ul> </li> <li>• Copper levels &lt; 3 µg/L (CCME 2005) should protect sensitive glochidia (Gillis et al. 2008).</li> </ul>
Encysted glochidial stage (reported to be 51–68 days) on host fish until drop off (early summer – late summer)	Development on Host for Encystment	Same as above with host fish(es) present	<ul style="list-style-type: none"> <li>• Attributes assumed to be same as below (as these conditions support both host fish[es] and adults).</li> <li>• Presence of host fish(es) (e.g., Channel Catfish).</li> <li>• DO levels sufficient to support host (DO &gt; 47% saturation at temperatures from 0-25°C; Provincial Water Quality Objectives [1994] for protection of warm-water species).</li> <li>• Summertime water temperatures reach ~27°C (range unknown) for successful development.</li> </ul>
Adult/Juvenile	Feeding Cover	Wetlands and reaches of medium to large rivers and streams with slow to fast flow characteristics and substrates suitable for burrowing (excluding areas of bedrock and hardpan clay)  (includes 'bankfull channel')	<ul style="list-style-type: none"> <li>• Typically slow to fast flow (in sufficient volume to prevent stranding and predation).</li> <li>• Substrates of coarse gravel, sand and clay/mud mixtures (Clark 1981); also over mud, sand, or fine gravel substrates (DFO, unpubl. data).</li> <li>• Supply of food (plankton: bacteria, algae, organic detritus, protozoans).</li> <li>• Dreissenids absent or in low abundance.</li> <li>• Maintenance of an "environmental thermal regime"<sup>5</sup> (gamete production and development).</li> </ul>

\* Note that not all attributes must be present for a feature to be identified as critical habitat.

<sup>4</sup> From the top of the riverbank on one side of the channel to the top of the riverbank on the other.

<sup>5</sup> Maintenance of an 'environmental thermal regime' requires that water temperatures are maintained within the limits of natural variability (daily or seasonal) such that life-cycle processes are completed without impacting the fitness of the organism.

Studies to further refine knowledge on the essential functions, features, and attributes for various life stages of the Mapleleaf are described in Section 7.5 (Schedule of Studies to Identify Critical Habitat).

## **7.4 Identification of Critical Habitat: Geospatial**

Using the best available information, critical habitat has been identified for Mapleleaf populations in the following waterbodies:

1. Ausable River
2. Sydenham River
3. Thames River (including McGregor and Baptiste creeks)
4. Ruscom River
5. Grand River
6. Welland River
7. Jordan Harbour/Twenty Mile Creek
8. Sixteen Mile Creek

The areas delineated on the following maps (Figures 3-9) represent the extent of critical habitat that can be identified at this time. Note that the areas delineated include the entire ‘bankfull’ channel (e.g., from the top of the riverbank on one side of the channel to the top of the riverbank on the other); this supports long-term channel forming discharges important in maintaining in-stream habitat conditions required by freshwater mussels. By using the ‘bounding box’ approach, critical habitat is not comprised of all areas within the identified boundaries, but only those areas where the specified essential biophysical features/attributes occur (refer to Table 7). Note that permanent anthropogenic structures that may be present within the delineated areas (e.g., marinas, navigation channels) are specifically excluded; it is understood that maintenance or replacement of these features may be required at times. Brief explanations for the areas within which critical habitat is identified are provided for each of the waterbodies below.

Table 8, below, provides the geographic coordinates that situate the boundaries within which critical habitat is found for Mapleleaf; these points are indicated on Figures 3-9.

**Table 8.** Coordinates locating the boundaries within which critical habitat is found for Mapleleaf\*.

Location	Coordinates† Locating Areas of Critical Habitat					
	Point 1	Point 2	Point 3	Point 4	Point 5	Point 6
Ausable River	81° 49' 5.599" W 43° 11' 13.915" N	81° 33' 18.043" W 43° 7' 53.382" N				
Sydenham River (including East and North)	81° 42' 12.309" W 42° 54' 14.978" N	81° 44' 0.289" W 42° 51' 35.425" N	81° 52' 1.573" W 42° 51' 35.535" N	81° 59' 56.182" W 42° 39' 12.599" N	82° 24' 38.800" W 42° 33' 36.788" N	82° 8' 13.617" W 42° 52' 47.700" N
Thames River	81° 19' 25.597" W 42° 57' 37.190" N	82° 1' 33.521" W 42° 31' 27.053" N				
McGregor Creek	81° 59' 11.077" W 42° 26' 37.826" N	82° 7' 49.746" W 42° 23' 34.944" N				
Baptiste Creek	82° 26' 36.418" W 42° 18' 20.955" N	82° 22' 30.444" W 42° 14' 33.384" N				
Ruscom River	82° 37' 42.843" W 42° 16' 15.942" N	82° 37' 44.693" W 42° 12' 23.755" N				
Grand River	79° 57' 43.053" W 43° 4' 26.316" N	79° 34' 40.903" W 42° 51' 21.477" N				
Welland River	79° 37' 46.408" W 43° 1' 25.455" N	79° 34' 10.326" W 42° 59' 58.040" N				
Jordan Harbour /Twenty Mile Creek	79° 22' 24.263" W 43° 11' 7.063" N	79° 22' 46.921" W 43° 8' 1.578" N				
Sixteen Mile Creek	79° 20' 1.317" W 43° 9' 35.325" N	79° 20' 0.553" W 43° 8' 8.046" N				

\*Riverine habitats are delineated to the midpoint of channel of the uppermost stream segment(s) and lowermost stream segment.

†All coordinates obtained using map datum NAD 83

**Ausable River:** The area within which critical habitat is found for Mapleleaf in the Ausable River is currently identified as the reach of river that includes all contiguous ALIS segments from the uppermost stream segment with the species present to the lowermost stream segment with the species present (Figure 3). This critical habitat description includes the entire ‘bankfull’ channel and represents a stretch of river approximately 65 km long. The downstream boundary within which critical habitat can be found ends approximately 1 km upstream of Parkhill Drive (County Road 18). The upstream boundary ends approximately 2 km downstream of Ailsa Craig.

**Sydenham River (including North Sydenham River and Bear Creek):** The area within which critical habitat is found for Mapleleaf in the East Sydenham River is currently identified as the reach of river represented as a single ALIS segment with the species present (Figure 4). Also connected with this segment are the lower reaches (< 3 km) of the following tributaries: Fansher, Brown, and Spring creeks. This critical habitat description includes the entire ‘bankfull’ channel. These areas represent a total river reach of approximately 150 km. The downstream extent of critical habitat ends at the confluence of the East Sydenham River with the Chenail Ecarte. The upstream extent of critical habitat in the East Sydenham River is the bridge at Murphy Drive (approximately 15 km northeast of Alvinston).

The area within which critical habitat is found for Mapleleaf in the North Sydenham River watershed is currently identified as the reach of river represented that includes all contiguous ALIS segments from the uppermost stream segment with the species present to the lowermost stream segment with the species present (Figure 4). This critical habitat description includes the entire ‘bankfull’ channel and includes the North Sydenham River (from the confluence with the East Sydenham River) upstream through reaches of Bear Creek to the dam just east of Petrolia. These areas represent a total river reach of approximately 200 km. Note that although no live Mapleleaf have been recorded from the main branch of the North Sydenham River (live animals have only been reported from Bear Creek), the species is assumed to be present here as habitat conditions are similar to those in the adjacent East Sydenham River where the species is abundant.

**Thames River (including McGregor and Baptiste creeks):** The area within which critical habitat is found for Mapleleaf in the Thames River is currently identified as the reach that includes all contiguous ALIS segments from the uppermost stream segment with the species present to the lowermost stream segment with the species present (Figure 5a). This critical habitat description includes the entire ‘bankfull’ channel and includes a stretch of river approximately 100 km long, from the City of London to a point approximately 5 km southwest of Thamesville.

The area within which critical habitat is found in McGregor Creek is currently identified as the reach that includes a single ALIS segment with the species present (Figure 5b). This critical habitat description includes the entire ‘bankfull’ channel and includes a stretch of river approximately 12 km long, from about 1.5 km upstream from Chatham to a point approximately 15 km northeast of Chatham.

The area within which critical habitat is found in Baptiste Creek is currently identified as the reach that includes a single ALIS segment with the species present (Figure 5c). This critical habitat description includes the entire ‘bankfull’ channel and includes a stretch of river approximately 10 km long, from the confluence with Big Creek to a point about 4 km south east of Tilbury.

**Ruscom River:** The area within which critical habitat is found for Mapleleaf in the Ruscom River is currently identified as the reach that includes a single ALIS segment with the species present (Figure 6). This critical habitat description includes the entire ‘bankfull’ channel and includes a stretch of river approximately 8 km long, beginning at the town of St. Joachim.

**Grand River:** The area within which critical habitat is found for Mapleleaf in the Grand River is currently identified as the reach that includes all contiguous ALIS segments from the uppermost stream segment with the species present to the lowermost stream segment with the species present (Figure 7). This critical habitat description includes the entire ‘bankfull’ channel and includes a stretch of the lower river approximately 50 km long, from the mouth of the river at Port Maitland upstream to the dam in Caledonia.

**Welland River:** The area within which critical habitat is found for Mapleleaf in the Welland River is currently identified as the reach that includes a single ALIS segment with the species present (Figure 8). This critical habitat description includes the entire ‘bankfull’ channel and includes a stretch of river beginning from a point approximately 7 km west of Wellandport and ending at a point approximately 10 km upstream.

**Jordan Harbour/Twenty Mile Creek:** The area within which critical habitat is found for Mapleleaf in Twenty Mile Creek is currently identified as the reach that includes a portion of a single ALIS segment with the species present (Figure 9). This critical habitat description includes the entire ‘bankfull’ channel and includes all contiguous waters of Jordan Harbour (up to the entrance to Lake Ontario) as well as the lower Twenty Mile Creek upstream to the first barrier at Ball’s Falls Conservation Area (a distance of approximately 5 km).

**Sixteen Mile Creek:** The area within which critical habitat is found for Mapleleaf in Sixteen Mile Creek is currently identified as the reach that includes a portion of a single ALIS segment with the species present (Figure 9). This critical habitat description includes the entire ‘bankfull’ channel and includes all contiguous waters of the lower Sixteen Mile Creek from the entrance to Sixteen Mile Pond, upstream to the first barrier at the Niagara Escarpment (a distance of approximately 3.5 km).

Note: Areas of critical habitat identified at these locations may overlap with critical habitat identified for other co-occurring species at risk (e.g., Northern Riffleshell [*Epioblasma torulosa rangiana*], Snuffbox [*Epioblasma triquetra*], Rayed Bean [*Villosa fabalis*], Salamander Mussel [*Simpsonias ambigua*], Round Pigtoe [*Pleurobema sintoxia*], and Eastern Sand Darter); however, the specific habitat requirements within these areas may vary by species.

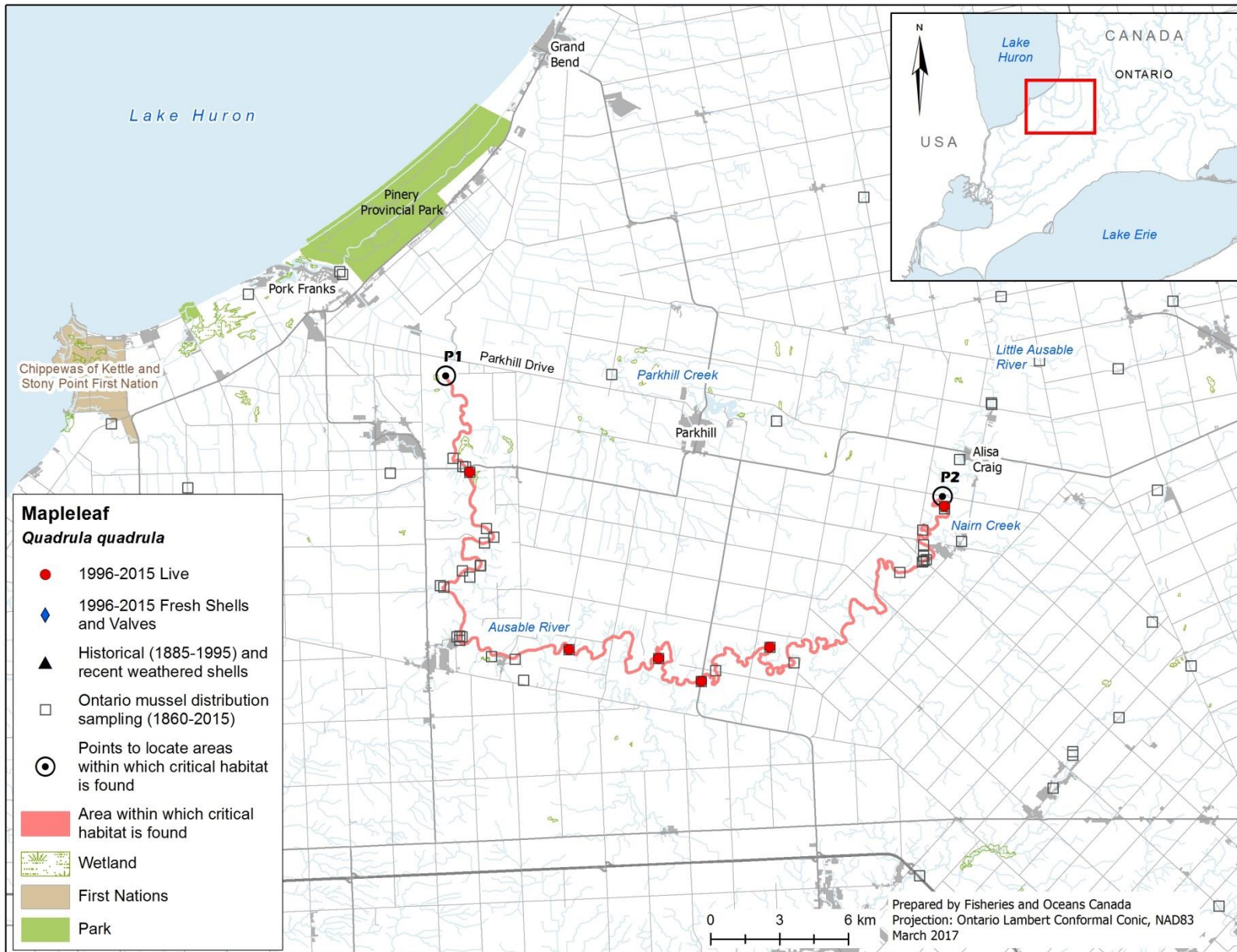
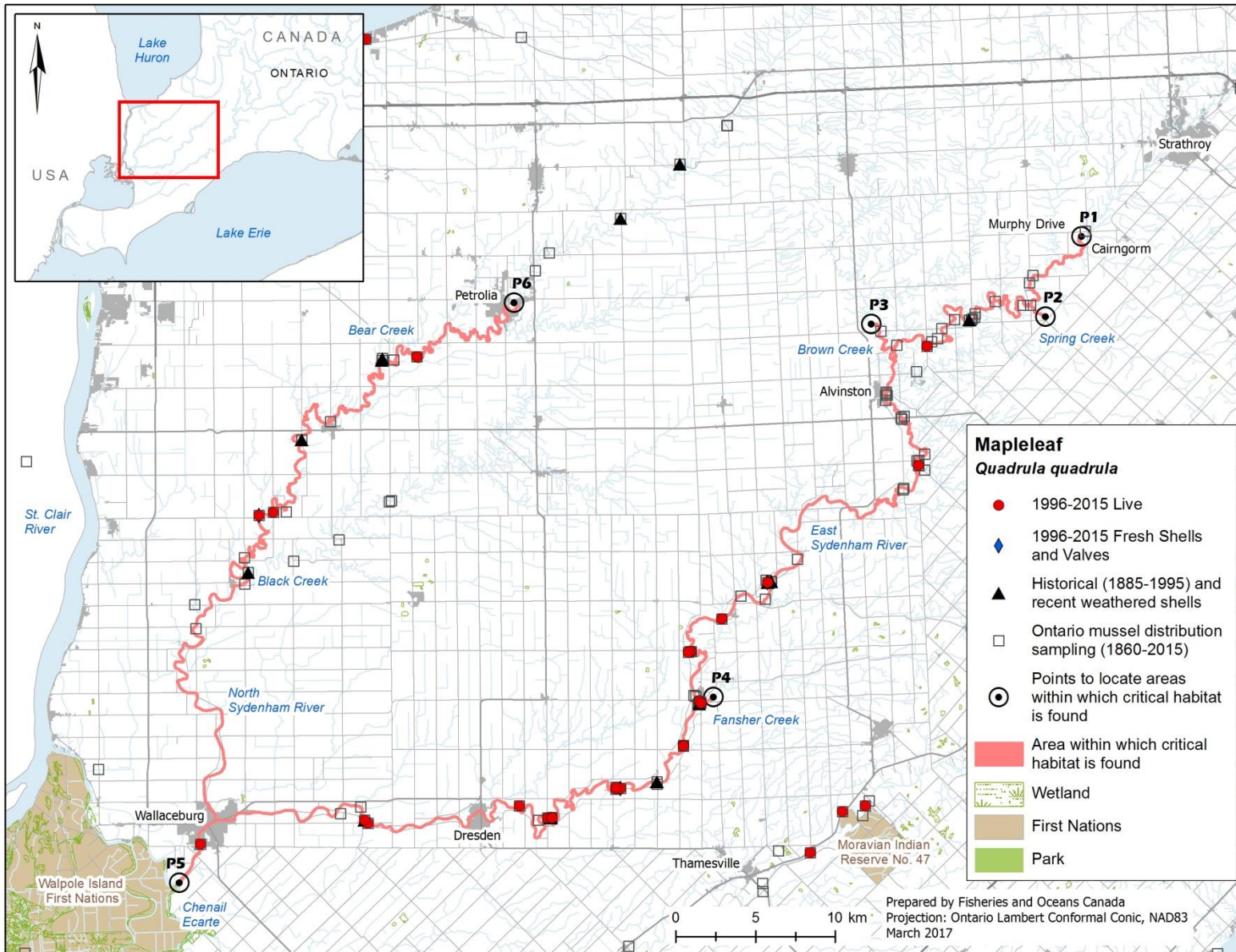


Figure 3. Area within which critical habitat is identified for Mapleleaf in the Ausable River.





**Figure 4.** Area within which critical habitat is identified for Mapleleaf in the East Sydenham River and the North Sydenham River (including Bear Creek).

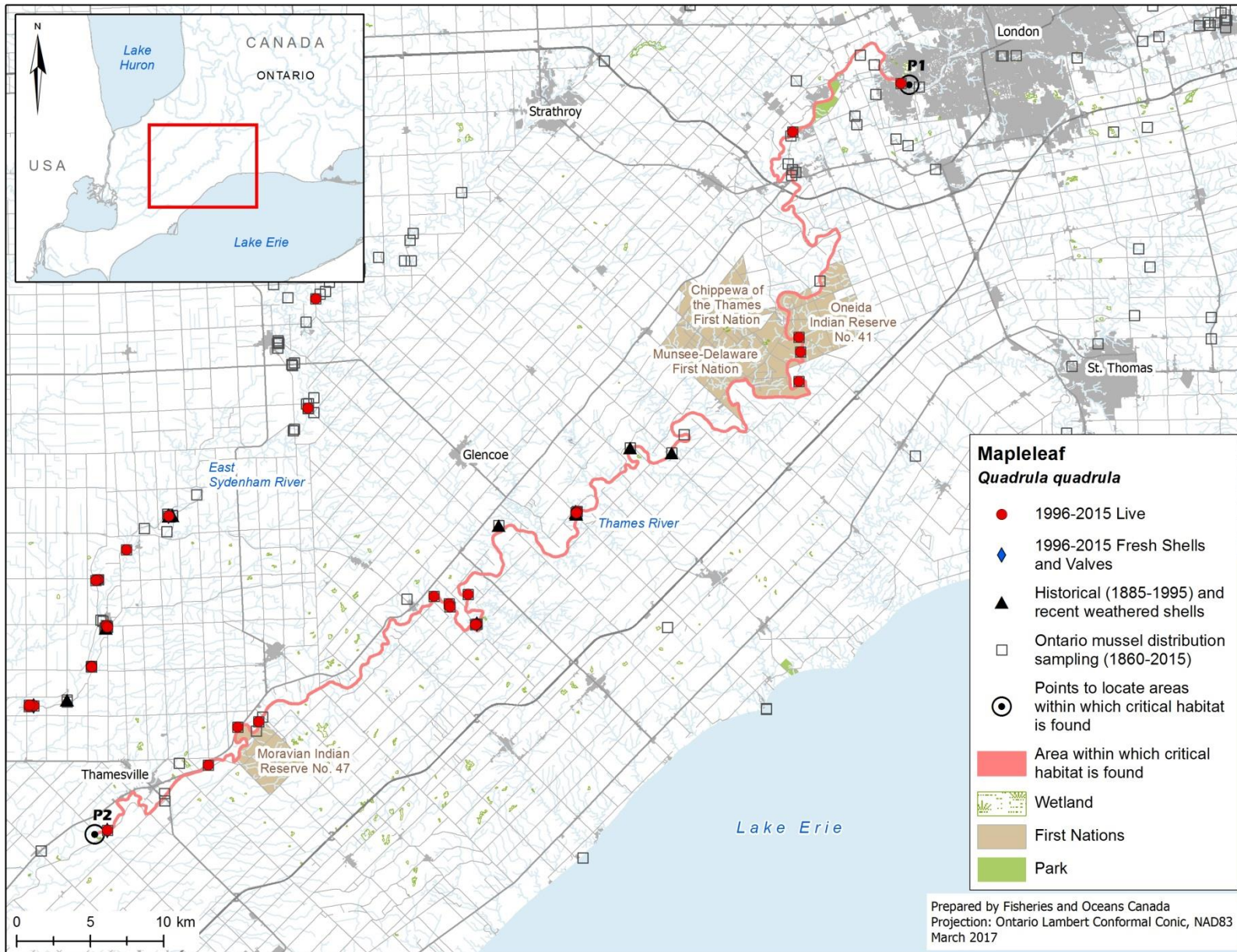
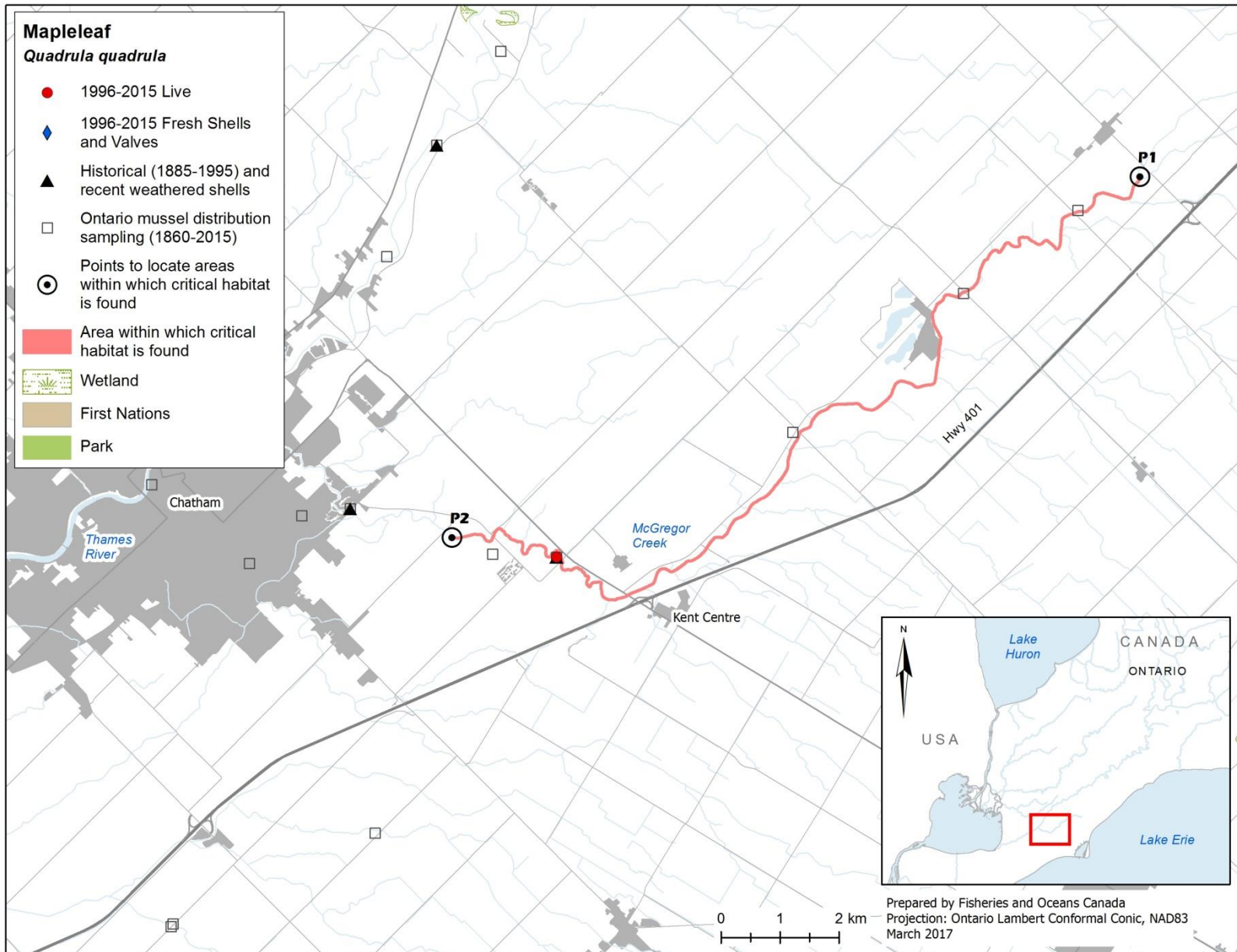
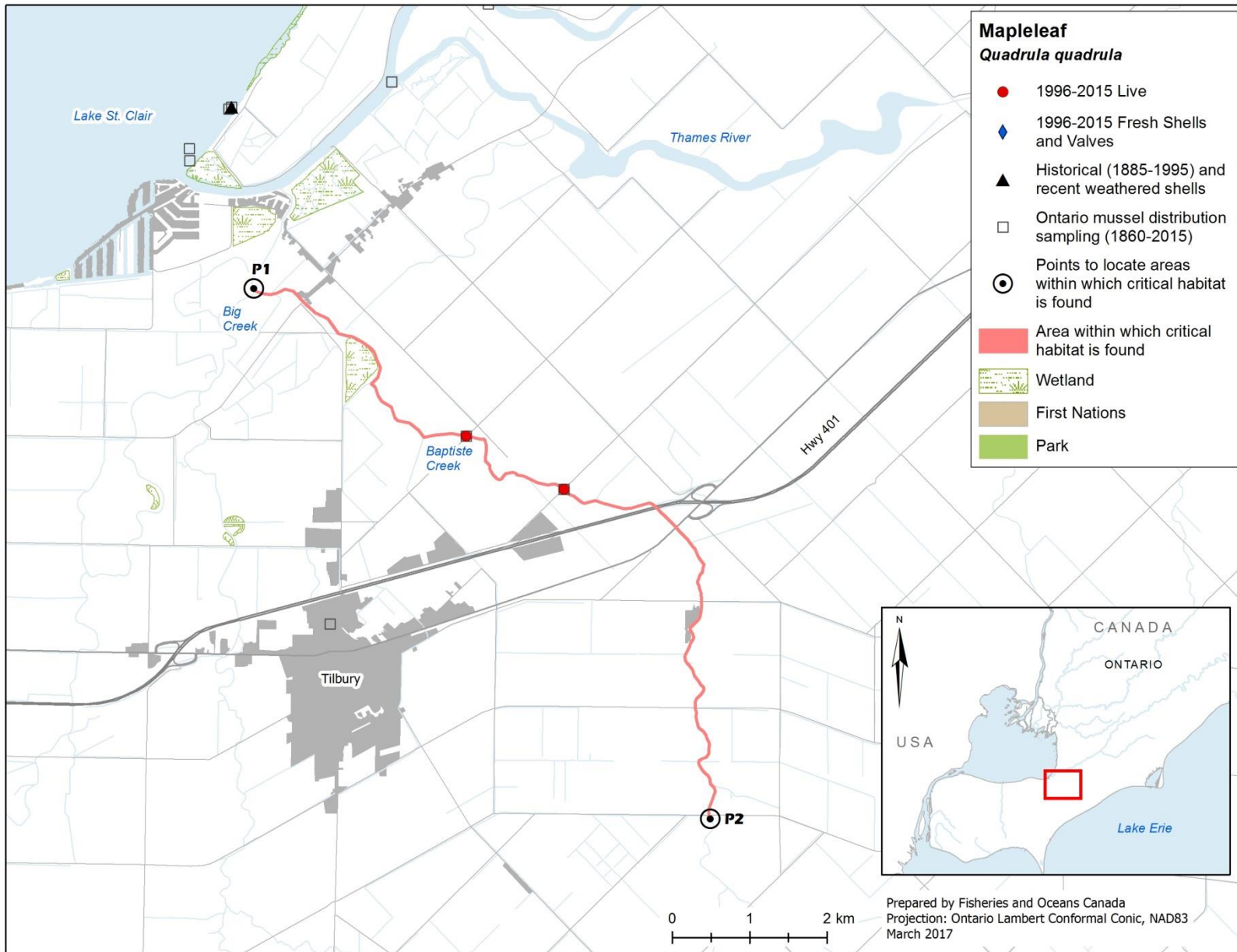


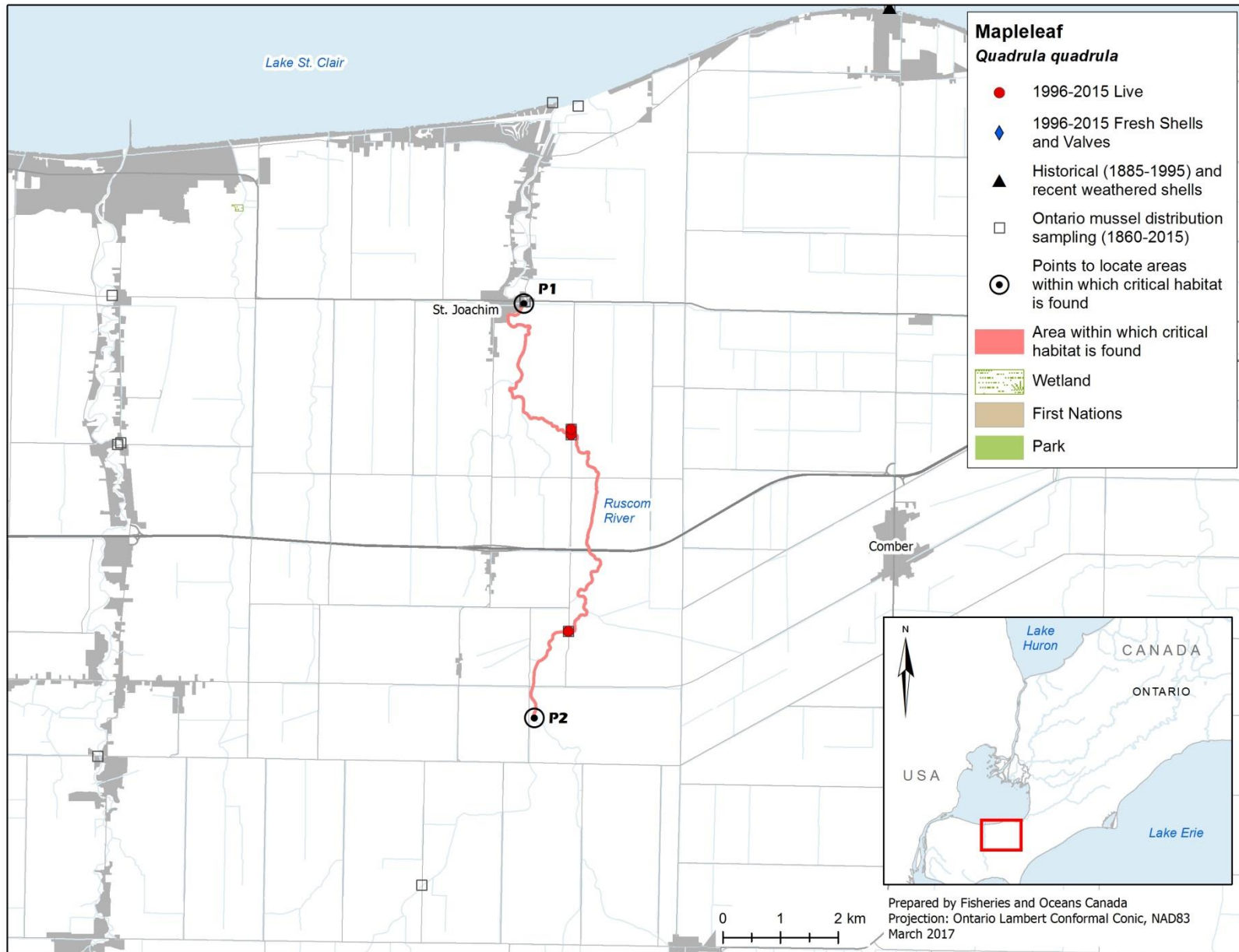
Figure 5(a). Area within which critical habitat is identified for Mapleleaf in the Thames River.



**Figure 5(b).** Area within which critical habitat is identified for Mapleleaf in McGregor Creek (Thames River).



**Figure 5(c).** Area within which critical habitat is identified for Mapleleaf in Baptiste Creek (Thames River).



**Figure 6.** Area within which critical habitat is identified for Mapleleaf in the Ruscom River.

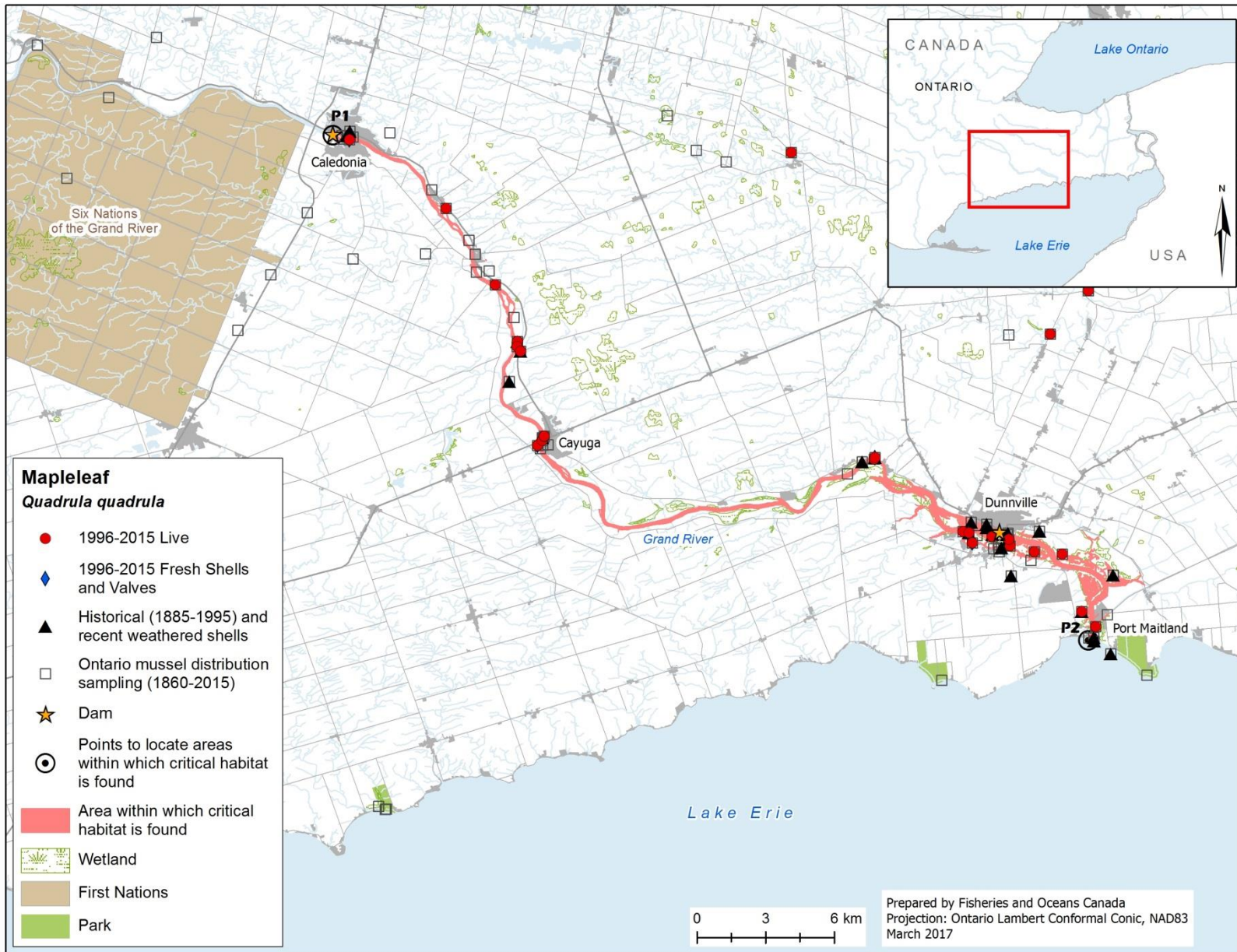
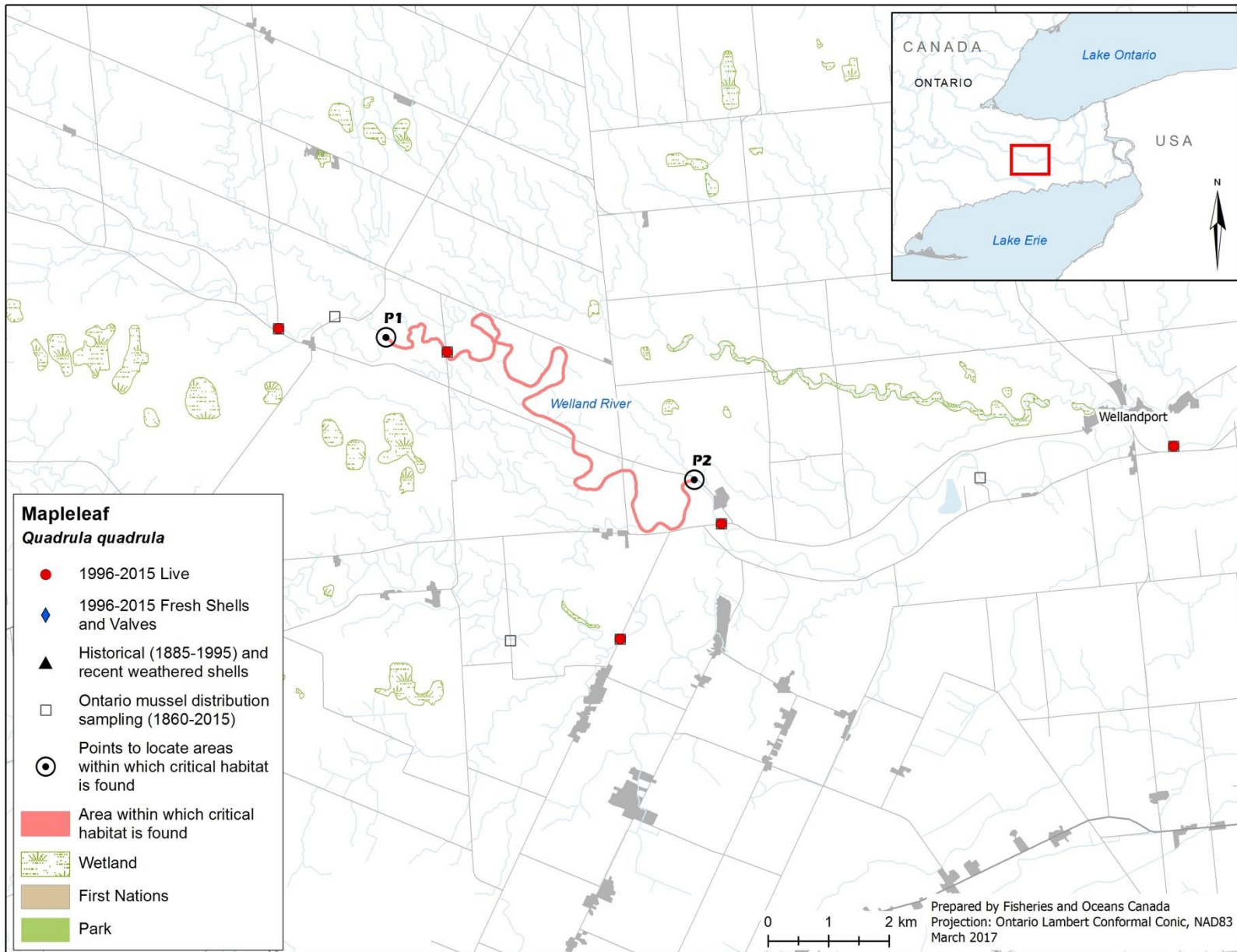
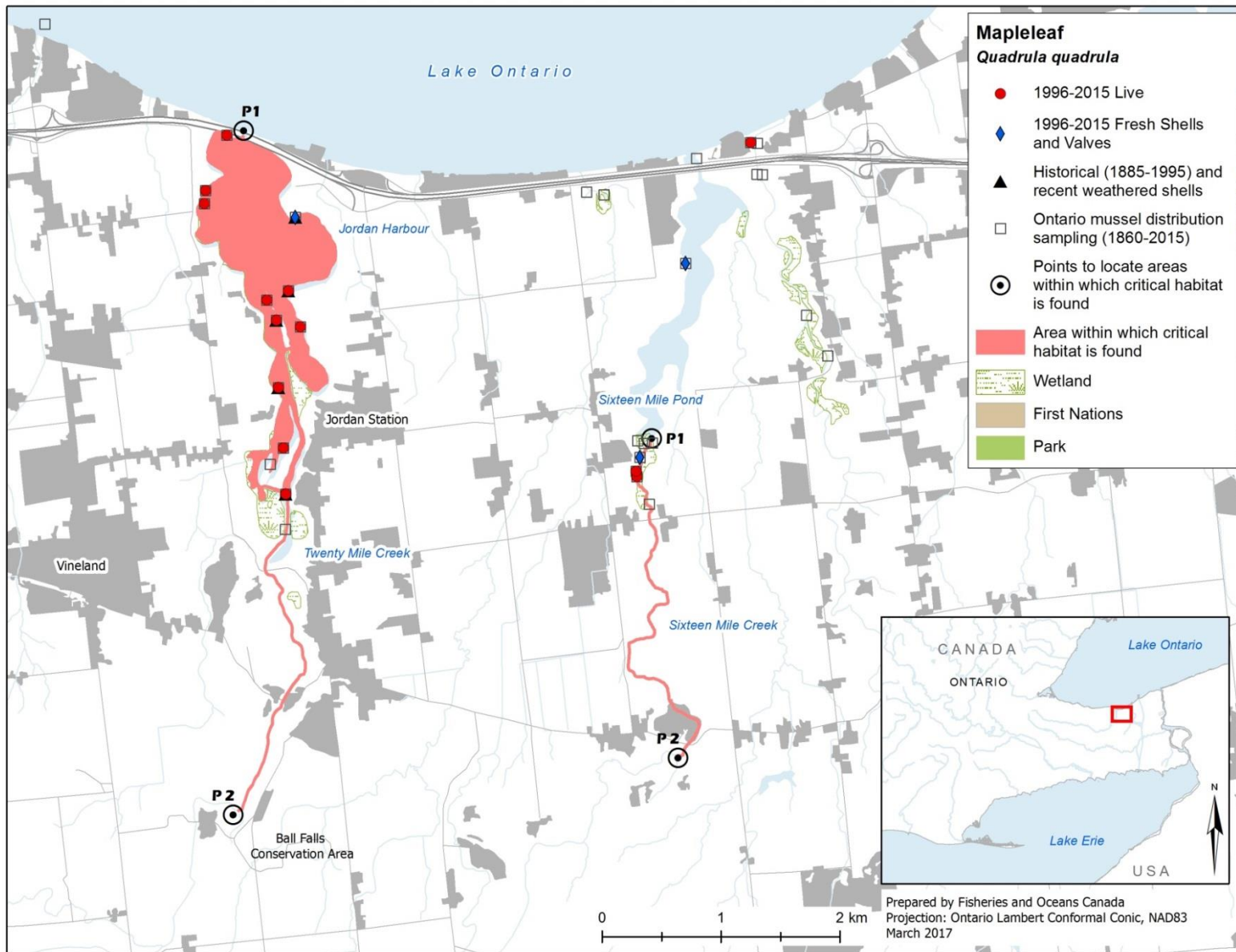


Figure 7. Area within which critical habitat is identified for Mapleleaf in the Grand River.



**Figure 8.** Area within which critical habitat is identified for Mapleleaf in the Welland River.



**Figure 9.** Area within which critical habitat is identified for Mapleleaf in Jordan Harbour, Twenty Mile Creek, and Sixteen Mile Creek.



The identification of critical habitat within the Ausable, Sydenham, Thames, Ruscom, Grand, and Welland rivers as well as Jordan Harbour/Twenty Mile Creek and Sixteen Mile Creek, will ensure that currently occupied habitat is protected, until such time as critical habitat is further refined according to the schedule of studies laid out in Section 7.5 (Schedule of Studies to Identify Critical Habitat). The schedule of studies outlines activities necessary to refine the current critical habitat descriptions at confirmed extant locations as well as address locations with limited information (e.g., Bayfield River, Jordan Harbour, Sixteen Mile Creek). Critical habitat descriptions will be refined as additional information becomes available to support the population and distribution objectives.

## 7.5 Schedule of Studies to Identify Critical Habitat

This recovery strategy and action plan includes an identification of critical habitat to the extent possible, based on the best available information. Further studies are required to refine critical habitat identified for Mapleleaf and to support the population and distribution objectives for this species. The activities listed in Table 9 are not exhaustive and it is likely that the process of investigating these actions will lead to the discovery of further knowledge gaps that need to be addressed.

**Table 9.** Schedule of studies to refine critical habitat.

Description of Activity	Outcome/Rationale	Timeline*
Conduct mussel population surveys in areas of known and potential occurrence.	Will define current Mapleleaf distribution and aid in refining population and distribution objectives as well as critical habitat.	2018–2020
Assess and characterize habitat conditions in currently occupied areas and determine if unique conditions are required for any particular life stage.	Refine features and attributes of critical habitat.	2018–2021
Determine/confirm the functional host fish species (Channel Catfish distribution and others possible).	Confirm/determine host for the glochidial phase.	2018–2021
Conduct host fish surveys (and associated habitat data) within the range of Mapleleaf where current data do not exist.	Will determine range and abundance of the suitable host fish(es).	2018–2020
Based on collected information, review population and distribution objectives. Determine amount, configuration and description of critical habitat required to achieve these objectives if adequate information exists.	Refinement of recovery objectives as well as critical habitat description required to meet these objectives.	Ongoing

\* Timelines are subject to change in response to demands on resources and/or personnel and as new priorities arise.

## **7.6 Examples of Activities Likely to Result in the Destruction of Critical Habitat**

The Mapleleaf, like most mussel species, is sensitive to a wide variety of stressors. Therefore, the activities described in Table 10 are neither exhaustive nor exclusive and have been guided by the threats described in Section 4 (Threats). The absence of a specific human activity does not preclude the department's ability to regulate it pursuant to SARA. Furthermore, the inclusion of an activity does not necessarily result in its prohibition. The prohibition against the destruction of critical habitat is engaged if a critical habitat protection order is made. Also, activities that impact critical habitat but do not result in its destruction are not prohibited. Since habitat use is often temporal in nature, every activity is assessed on a case-by-case basis and site-specific mitigation measures are applied where they are available and reliable. In every case, where information is available, thresholds and limits are associated with attributes to better inform management and regulatory decision-making. However, in many cases the knowledge of a species and its critical habitat may be lacking. In particular, information associated with a species' or habitat's thresholds of tolerance to disturbance from human activities is lacking and must be acquired.

**Table 10.** Examples of human activities likely to result in the destruction of critical habitat for Mapleleaf. The pathway of effect for each activity is provided as well as the potential links to the biophysical functions, features, and attributes of critical habitat.

Activity	Effect Pathway	Function Affected	Feature Affected	Attribute Affected
<p><b>Siltation and Turbidity:</b> Work in or around water with improper sediment and erosion control (e.g., installation of bridges, pipelines, culverts), overland runoff from ploughed fields, run-off from urban and residential development, use of industrial equipment, cleaning or maintenance of bridges or other structures without proper mitigation.</p> <p>Unfettered livestock access to waterbodies.</p> <p>Removal or cultivation of riparian vegetation.</p>	<p>Improper sediment and erosion control or mitigation can cause increased turbidity and sediment deposition, changing preferred substrates and impairment of feeding and reproductive functions.</p> <p>When livestock have unfettered access to waterbodies, damage to shorelines, banks and watercourse bottoms can cause increased erosion and sedimentation, affecting turbidity and water temperatures.</p> <p>Agricultural lands, particularly those with little riparian vegetation and without tile drainage, allow large inputs of sediments to the watercourse.</p>	<p>Reproduction Feeding Cover Development on Host for Encystment</p>	<p>Wetlands and reaches of medium to large rivers and streams with slow to fast flow characteristics and substrates suitable for burrowing (excluding areas of bedrock and hardpan clay) (includes 'bankfull channel')</p> <p>Presence of host fish(es)</p>	<ul style="list-style-type: none"> <li>• Summertime water temperatures</li> <li>• Substrates of coarse gravel, sand and clay/mud</li> <li>• Presence of host species</li> <li>• Food supply</li> <li>• Maintenance of an environmental thermal regime</li> </ul>

**Table 10 (cont'd).** Examples of human activities likely to result in the destruction of critical habitat for Mapleleaf. The pathway of effect for each activity is provided as well as the potential links to the biophysical functions, features, and attributes of critical habitat.

Activity	Effect Pathway	Function Affected	Feature Affected	Attribute Affected
<p><b>Nutrient Loading:</b> Over-application of fertilizer and improper nutrient management (e.g., organic debris management, wastewater management, animal waste, septic systems, and municipal sewage).</p>	<p>Improper nutrient management can cause nutrient loading of nearby waterbodies. Elevated nutrient levels (phosphorus and nitrogen) can cause increased turbidity causing harmful algal blooms, changing water temperatures, and reduced DO levels.</p> <p>Mussel survival rates are closely related to DO levels. Low DO may cause mortality of warm water host fish(es), thereby disrupting mussel reproductive cycles.</p> <p>Recent evidence has shown that juvenile mussels are among the most sensitive aquatic organisms to ammonia toxicity.</p>	<p>Reproduction Feeding Nursery Cover</p>	<p>Wetlands and reaches of medium to large rivers and streams with slow to fast flow characteristics and substrates suitable for burrowing (excluding areas of bedrock and hardpan clay) (includes 'bankfull channel')</p> <p>Presence of host fish(es)</p>	<ul style="list-style-type: none"> <li>• Summertime water temperatures</li> <li>• Presence of host fish species</li> <li>• Food supply</li> <li>• Low contaminants levels – ammonia</li> <li>• DO levels sufficient to support host</li> <li>• Maintenance of an environmental thermal regime</li> </ul>
<p><b>Altered Flow Regimes:</b> Water-level management (e.g., through dam operation) or water extraction activities (e.g., for irrigation), that causes dewatering of habitat or excessive flow rates; large increases in impervious surfaces from urban and residential development.</p>	<p>High flow conditions (and 'flashier' flows) can cause dislodgement and passive transport of mussels from areas of suitable habitat into areas of lesser or marginal habitat.</p> <p>Low flows can result in depressed DO levels, desiccation, elevated temperatures and stranding. Host fish(es) may also be impacted, thereby disrupting reproduction.</p> <p>Altered flow patterns can affect habitat availability (e.g., by 'dewatering' habitats) in creeks and rivers, sediment deposition (e.g., changing preferred substrates), and water temperatures.</p>	<p>Same as above</p>	<p>Same as above</p>	<ul style="list-style-type: none"> <li>• Adequate flow</li> <li>• Summertime water temperatures</li> <li>• Food supply</li> <li>• DO levels sufficient to support host</li> <li>• Presence of host fish species</li> <li>• Substrates of coarse gravel, sand and clay/mud</li> <li>• Maintenance of an environmental thermal regime</li> </ul>

**Table 10 (cont'd).** Examples of human activities likely to result in the destruction of critical habitat for Mapleleaf. The pathway of effect for each activity is provided as well as the potential links to the biophysical functions, features, and attributes of critical habitat.

Activity	Effect Pathway	Function Affected	Feature Affected	Attribute Affected
<p><b>Disruption of Host Fish(es):</b> Excessive removal of host fish(es) through either commercial or recreational harvest, or indirect means (e.g., damming activities may prevent fish movement).</p>	<p>Any activities that affect the host species' abundance, movements, or behaviour during the period of encystment or release may disrupt the reproductive cycle of these mussels.</p>	<p>Development on Host for Encystment</p>	<p>Same as above</p>	<ul style="list-style-type: none"> <li>• Presence of host fish species</li> </ul>
<p><b>Contaminants and Toxic Substances:</b> Over application or misuse of herbicides and pesticides.</p> <p>Release of urban and industrial pollution into habitat (including the impact of stormwater runoff from existing and new developments).</p> <p>Introduction of high levels of chloride through activities such as excessive salting of roads in winter.</p>	<p>Introduction of toxic compounds (e.g., high chloride levels from stormwater runoff) into habitat used by these species can change water chemistry affecting habitat and host fish(es) availability or use, especially during sensitive life stages (glochidia, juvenile).</p> <p>Chloride levels have shown recent inclines due to an increased use of road salt. High chloride levels can cause direct mortality of sensitive glochidia.</p>	<p>Reproduction Cover Development on Host for Encystment</p>	<p>Same as above</p>	<ul style="list-style-type: none"> <li>• Presence of host fish species</li> <li>• Contaminants levels – chloride, ammonia, and copper</li> </ul>
<p><b>Habitat Removal and Alterations:</b></p> <ul style="list-style-type: none"> <li>• Dredging</li> <li>• Grading</li> <li>• Excavation</li> </ul> <p>Placement of material or structures in water (e.g., groynes, piers, infilling, partial infills, jetties).</p>	<p>Changes in bathymetry, shoreline and channel morphology caused by dredging and near-shore grading and excavation can move mussels, alter preferred substrates, change water depths, and change flow patterns potentially affecting turbidity, nutrient levels and water temperatures.</p> <p>Placing material or structures in water reduces habitat availability (e.g., the footprint of the infill or structure is lost). Placing of fill can cover organisms and preferred substrates for mussels and their host fish(es).</p>	<p>Reproduction Cover Feeding Development on Host for Encystment</p>	<p>Same as above</p>	<ul style="list-style-type: none"> <li>• Summertime water temperatures</li> <li>• Substrates of coarse gravel, sand and clay/mud</li> <li>• Presence of host fish species</li> <li>• Food supply</li> <li>• Adequate water flow</li> </ul>

**Table 10 (cont'd).** Examples of human activities likely to result in the destruction of critical habitat for Mapleleaf. The pathway of effect for each activity is provided as well as the potential links to the biophysical functions, features, and attributes of critical habitat.

Activity	Effect Pathway	Function Affected	Feature Affected	Attribute Affected
<p><b>Physical Habitat Loss/Modification:</b> Construction of dams and/or barriers.</p>	<p>Dams/barriers can result in direct loss of habitat or fragmentation, which can limit the reproductive capabilities of mussels by eliminating or decreasing the number of hosts available.</p>	<p>Reproduction Cover Feeding Development on Host for Encystment</p>	<p>Same as above</p>	<ul style="list-style-type: none"> <li>• Summertime water temperatures</li> <li>• Substrates of coarse gravel, sand and clay/mud</li> <li>• Presence of host fish species</li> <li>• Food supply</li> <li>• Adequate water flow</li> </ul>
<p><b>Recreational Activities:</b>  Excessive baitfish collection (either recreational or commercial); baitfish releases.  Use of motor vehicles in the river.</p>	<p>Can affect (direct or indirectly) the number and health of available host fishes.  Spread aquatic invasive species (boats, bait buckets).  Disrupt substrate, dislodge and/or damage mussels.</p>	<p>Reproduction Cover Feeding Development on Host for Encystment</p>	<p>Same as above</p>	<ul style="list-style-type: none"> <li>• Presence of host fish species</li> <li>• Substrates of coarse gravel, sand and clay/mud</li> <li>• Dreissenids absent or in low abundance</li> </ul>

In the future, threshold values for some stressors may be informed through further research. For some of the above activities, BMPs may be enough to mitigate threats to the species and its habitat; however, in some cases, it's not known if BMPs are adequate to protect critical habitat and further research is required.

## 7.7 Proposed Measures to Protect Critical Habitat

Under SARA, critical habitat for aquatic species not found in an area described in subsection 58(2) of the Act must be legally protected within 180 days of the final recovery strategy or action plan in which it is identified being posted on the Species at Risk Public Registry. For the critical habitat of Mapleleaf, it is anticipated that this will be accomplished through a SARA Critical Habitat Order made under subsections 58(4) and (5), which will trigger the prohibition in subsection 58(1) against the destruction of the identified critical habitat.

## 8. Relevant Habitat Legislation

Under SARA, there are general prohibitions against killing, harming, taking, possessing, capturing, and collecting the Mapleleaf. Once identified, SARA includes provisions to prevent the destruction of critical habitat.

Provincially, protection is also afforded under the *Planning Act*. Planning authorities are required to be “consistent with” the provincial Policy Statement under Section 3 of Ontario’s *Planning Act*, which prohibits development and site alteration in the habitat of Endangered or Threatened species. In addition, the Mapleleaf is listed as Threatened under Ontario’s *Endangered Species Act, 2007* (ESA). Under the ESA, individuals are currently protected from harm and harassment, and the species has received general habitat protection since June 30, 2013. Stream-side development in Ontario is managed through flood plain regulations enforced by local conservation authorities.

## 9. Socio-Economic Evaluation of the Action Plan

SARA requires that the action plan component of the recovery document<sup>6</sup> include an evaluation of the socio-economic costs of the action plan and the benefits to be derived from its implementation (SARA 49(1)(e)). This evaluation addresses only the incremental socio-economic costs of implementing this action plan from a national perspective as well as the social and environmental benefits that would occur if the action plan were implemented in its entirety, recognizing that not all aspects of its implementation are under the jurisdiction of the federal government. Its intent is to inform the public and to guide decision making on implementation of the action plan by partners.

The protection and recovery of species at risk can result in both benefits and costs. The Act recognizes that “wildlife, in all its forms, has value in and of itself and is valued by Canadians for aesthetic, cultural, spiritual, recreational, educational, historical, economic, medical, ecological and scientific reasons” (SARA). Self-sustaining and healthy ecosystems with their various elements in place, including species at risk, contribute positively to the livelihoods and the quality of life of all Canadians. A review of the literature confirms that Canadians value the preservation and conservation of species in and of themselves. Actions taken to preserve a

---

<sup>6</sup> The “action plan component of the recovery document” will simply be referred to as “action plan” from this point forward.

species, such as habitat protection and restoration, are also valued. In addition, the more an action contributes to the recovery of a species, the higher the value the public places on such actions (Loomis and White 1996; DFO 2008). Furthermore, the conservation of species at risk is an important component of the Government of Canada's commitment to conserving biological diversity under the *International Convention on Biological Diversity*. The Government of Canada has also made a commitment to protect and recover species at risk through the *Accord for the Protection of Species at Risk*. The specific costs and benefits associated with this action plan are described below. The evaluation describes, to the extent possible, the benefits that may accrue, as well as the costs that governments, industry and/or Canadians may incur due to activities identified in this action plan.

It is important to note that the socio-economic evaluation only applies to the detailed recovery measures. The setting of population and distribution objectives and the identification of critical habitat are science-based exercises and socio-economic factors were not considered in their development.

This evaluation does not address the socio-economic impacts of protecting critical habitat for Mapleleaf. Under SARA, DFO must ensure that critical habitat identified in a recovery strategy or action plan is legally protected within 180 days of the final posting of the recovery document. Where a Critical Habitat Order will be used for critical habitat protection, the development of the Order will follow a regulatory process in compliance with the Cabinet Directive on Regulatory Management, including an analysis of any potential incremental impacts of the Ministerial Order that will be included in the Regulatory Impact Analysis Statement. As a consequence, no additional analysis of the critical habitat protection has been undertaken for the assessment of costs and benefits of the action plan.

### **Policy Baseline**

The policy baseline consists of the protection under SARA for Mapleleaf (the species was listed under SARA in 2013), along with continued protection under Ontario's *Endangered Species Act, 2007*. Other legislation that may provide direct or indirect habitat protection for Mapleleaf include the federal *Fisheries Act* and existing provincial legislation<sup>7</sup>. The policy baseline also includes any recovery actions<sup>8</sup> that were implemented prior<sup>9</sup> to and after Mapleleaf was listed under SARA. These recovery actions included various projects<sup>10</sup> funded by the federal government and province of Ontario.

### **Socio-Economic Benefits of Implementing this Action Plan**

Some of the benefits of recovery actions required to return or maintain self-sustaining populations of Mapleleaf outlined in this action plan are difficult to quantify but would generally be positive. Generally, freshwater mussels are ecologically important as a food source for many aquatic and terrestrial animals; they indirectly provide ecosystem services by improving water

---

<sup>7</sup> Examples of other provincial legislation that provide habitat protection include, but may not be limited to, considerations under Section 3 of Ontario's *Planning Act*, which prohibits development and site alteration in the significant habitat of endangered species and protection under the *Lakes and Rivers Improvement Act* in Ontario.

<sup>8</sup> Where recovery actions for several freshwater mussel species whose distributions partly overlap with Mapleleaf have been implemented.

<sup>9</sup> Recovery actions that will benefit Mapleleaf have been implemented under the *Recovery Strategy for the Northern Riffleshell, Snuffbox, Round Pigtoe, Salamander Mussel and Rayed Bean in Canada*, the *Recovery Strategy for the Round Hickorynut (Obovaria subrotunda) and the Kidneyshell (Ptychobranchus fasciolaris) in Canada*, and the *Recovery Strategy for the Wavy-rayed Lampmussel (Lampsilis fasciola) in Canada*. Ecosystem-based recovery strategies that will benefit Mapleleaf include the Sydenham River Action Plan, Thames River ecosystem recovery strategy, Ausable River ecosystem recovery strategy and the Grand River fish species at risk recovery strategy.

<sup>10</sup> Projects included host fish research.



quality by filtering contaminants, sediments, and nutrients from waterways; and, because mussels are sensitive to toxic chemicals, they serve as an early warning system to alert us of water quality problems. These ecosystem benefits would be maintained as a result of implementing the recovery actions proposed in the action plan.

Some of the unquantifiable non-market benefits mentioned in the second paragraph of this evaluation would be enjoyed by the Canadian public as a result of implementing the recovery actions contained in the action plan. The implementation of local stewardship programs to improve habitat conditions and reduce threats within critical habitat will help to improve riverine habitat and help lead to healthier watersheds through improved water quality.

### **Socio-Economic Costs of Implementing this Action Plan**

The majority of the recovery activities identified in this action plan are short-term (2018-2021), medium term or ongoing. Most of these activities focus on research, monitoring, engagement, education, and management to reduce threats and to inform and promote species recovery. Some of the actions are one-time projects (e.g., research and monitoring), likely funded from existing federal government resources. Implementation of local stewardship actions would be supported by programs such as the Species at Risk Habitat Stewardship Program. In addition, most programs require a level of direct or in-kind support costs from applicants as matching funds<sup>11</sup>. The costs (direct and in-kind) associated with these short-term actions are estimated to be low<sup>12</sup> and spread over the next five years<sup>13</sup>.

Costs would be incurred by the federal government to implement the activities listed in the action plan. In-kind costs such as volunteer time, providing expertise and equipment would be incurred as a result of implementing activities listed in the action plan. Costs (including in-kind support) could be incurred by the province of Ontario and conservation authorities.

Long-term recovery activities will be developed through a cooperative approach following discussions between other agencies, levels of government, stewardship groups and stakeholders allowing for consideration of costs and benefits during the process.

---

<sup>11</sup> For example, matching funds for the Species at Risk Habitat Stewardship Program can come from landowners and/or provincial funding programs. This helps leverage additional support for recovery actions.

<sup>12</sup> Low costs are defined as less than \$1 million annually, as per the Treasury Board of Canada definition.

<sup>13</sup> Future expenditures cannot be determined in great detail as it is expected these activities would continue to be funded through existing government funding, including the Species at Risk Habitat Stewardship Program, where support is determined on a priority basis and based on availability of resources.

**Distributional Impacts**

Governments and conservation authorities will incur the majority of costs of implementing the action plan.

The Canadian public will benefit from the implementation of the action plan through expected non-market and ecosystem benefits associated with recovery and protection of the species and its habitat. Recovery actions that improve riverine habitat will help lead to healthier watersheds with benefits such as improved water quality.

**10. Measuring Progress**

The overall success of implementing the recommended recovery approaches will be evaluated primarily through routine population (distribution and abundance) and habitat (quality and quantity) surveys and monitoring (refer to Implementation Schedule – Table 5, Recovery Measures #1 and #4). During the next five years, focus will be placed on completing recovery actions identified as “high priority” for Mapleleaf. Reporting on implementation of the action plan components, under s. 55 of SARA, will be done by assessing progress towards achieving the broad strategies/approaches outlined in this document. Reporting on the ecological and socio-economic impacts of the action plan, under s. 55 of SARA, will be done by assessing the results of monitoring the recovery of the species and its long-term viability, and by assessing the implementation of the action plan.

## 11. References

- Augspurger, T., A.E. Keller, M.C. Black, W.D. Cope, and F.J. Dwyer. 2003. Water quality guidance for protection of freshwater mussels (Unionidae) from ammonia exposure. *Environmental Toxicology and Chemistry* 22: 2569–2575.
- Ausable River Recovery Team. 2006. Recovery strategy for fish species at risk in the Ausable River: an ecosystem approach, 2005–2010 in Canada [Proposed]. In *Species at Risk Act Recovery Strategy Series*. Ottawa: Fisheries and Oceans Canada. 140 pp.
- Baitz, A., M. Veliz, H. Brock, and S. Staton. 2008. A monitoring program to track the recovery of endangered freshwater mussels in the Ausable River, Ontario [Draft]. Prepared for the Ausable River Recovery Team, the Interdepartmental Recovery Fund and Fisheries and Oceans Canada, Ausable Bayfield Conservation Authority, Exeter, Ontario.
- Balfour, D.L. and L.A. Smock. 1995. Distribution, age structure, and movements of the freshwater mussel *Elliptio complanata* (Mollusca: Unionidae) in a headwater stream. *Journal of Freshwater Ecology* 10: 255–268.
- Bouvier, L.D. and T.J. Morris. 2011. Information in support of a recovery potential assessment of Eastern Pondmussel (*Ligumia nasuta*), Fawnsfoot (*Truncilla donaciformis*), Mapleleaf (*Quadrula quadrula*), and Rainbow (*Villosa iris*) in Canada. DFO Canadian Science Advisory Secretariat Research Document. 2010/120. vi + 51 pp.
- Bowers, R.W. and F.A. de Szalay. 2007. Fish predation of zebra mussels attached to *Quadrula quadrula* (Bivalvia: Unionidae) and benthic molluscs in a Great Lakes coastal wetland. *Wetlands* 27: 203–208.
- Bringolf, R.B., W.G. Cope, C.B. Eads, P.R. Lazaro, M.C. Barnhart, and D. Shea. 2007. Acute and chronic toxicity of technical-grade pesticides to glochidia and juveniles of freshwater mussels (Unionidae). *Environmental Toxicology and Chemistry* 26: 2086–2093.
- Brumpton, A., S.M. Reid, S. Hogg, and T. Morris. 2013. Lake Ontario coastal wetlands and native freshwater mussels: refugia from dreissenid mussels? Poster presented at: Canadian Conference for Fisheries and Aquatic Sciences in Windsor, Ontario, January 3-5th 2013.
- CCME (Canadian Council of Ministers of the Environment). 2005. Canadian water quality guidelines. Environment and Climate Change Canada, Ottawa, ON.
- CCME (Canadian Council of Ministers of the Environment). 2011. Canadian water quality guidelines (chloride). Environment and Climate Change Canada, Ottawa, ON.
- Clarke, A.H. 1981. The Freshwater Molluscs of Canada. National Museum of Natural Sciences/National Museums of Canada, Ottawa, Canada. 446 pp.
- Cope, W.G., R.B. Bringolf, D.B. Buchwalter, T.J. Newton, C.G. Ingersoll, N. Wang, T. Augspurger, F.J. Dwyer, M.C. Barnhart, R.J. Neves, and E. Hammer. 2008. Differential exposure, duration, and sensitivity of unionoidean bivalve life stages to environmental contaminants. *Journal of the North American Benthological Society* 27: 451–462.

- COSEWIC (Committee on the Status of Endangered Wildlife in Canada). 2006. COSEWIC assessment and status report on the Mapleleaf *Quadrula quadrula* (Saskatchewan–Nelson population and Great Lakes–Western St. Lawrence population) in Canada. Committee on the Status of Endangered Wildlife in Canada. Ottawa. vii. + 58p. [SARA Registry Mapleleaf](#) (Accessed 5 March, 2009).
- COSEWIC (Committee on the Status of Endangered Wildlife in Canada). 2008. COSEWIC assessment and update status report on the Fawnsfoot (*Truncilla donaciformis*) in Canada. vii + 39 pp.
- de Solla, S.R., A.O. Silva, and R.J. Letcher. 2011. Highly elevated levels of perfluorooctane sulfonate and other perfluorinated acids found in biota and surface water downstream of an international airport, Hamilton, Ontario, Canada. *Environment International* 39, pp. 19-26.
- Dextrase, A.J., S.K. Staton, and J.L. Metcalfe-Smith. 2003. National recovery strategy for species at risk in the Sydenham River: an ecosystem approach. National Recovery Plan No. 25. Recovery of Nationally Endangered Wildlife (RENEW). Ottawa, Ontario. 73 pp.
- DFO (Fisheries and Oceans Canada). 2008. Estimation of the economic benefits of marine mammal recovery in the St. Lawrence estuary. Policy and Economics Regional Branch, Quebec 2008.
- DFO (Fisheries and Oceans Canada). 2011a. Assessment of methods for the identification of critical habitat for freshwater mussels. DFO Canadian Science Advisory Secretariat Science Advisory Report 2011/047.
- DFO (Fisheries and Oceans Canada). 2011b. Recovery potential assessment of Eastern Pondmussel (*Ligumia nasuta*), Fawnsfoot (*Truncilla donaciformis*), Mapleleaf (*Quadrula quadrula*), and Rainbow (*Villosa iris*) in Canada. DFO Canadian Science Advisory Secretariat Science Advisory Report 2010/073.
- DFO (Fisheries and Oceans Canada). 2013. Recovery Strategy for the Round Hickorynut (*Obovaria subrotunda*) and the Kidneyshell (*Ptychobranthus fasciolaris*) in Canada. *Species at Risk Act* Recovery Strategy Series. Fisheries and Oceans Canada. Ottawa. 70 pp.
- DFO (Fisheries and Oceans Canada). 2018a. Action Plan for the Sydenham River in Canada: An Ecosystem Approach. *Species at Risk Act* Action Plan Series. Fisheries and Oceans Canada, Ottawa. iv + 35 pp.
- DFO (Fisheries and Oceans Canada). 2018b. Recovery Strategy for Northern Riffleshell, Snuffbox, Round Pigtoe, Salamander Mussel and Rayed Bean in Canada [Proposed]. *Species at Risk Act* Recovery Strategy Series. Fisheries and Oceans Canada, Ottawa, 95 pp.
- Gagné, F., C. Blaise, and J. Hellou. 2004. Endocrine disruption and health effects of caged mussels, *Elliptio complanata*, placed downstream from a primary-treated municipal effluent plume for 1 year. *Comparative Biochemistry and Physiology Part C* 138: 33–44.

- Gagnon, C., F. Gagné, P. Turcotte, I. Saulnier, C. Blaise, M. Salazar, and S. Salazar. 2006. Metal exposure to caged mussels in a primary-treated municipal wastewater plume. *Chemosphere* 62: 998–1010.
- Gillis P.L. 2011. Assessing the toxicity of sodium chloride to the glochidia of freshwater mussels: implications for salinization of surface waters. *Environmental Pollution* 159(6): 1702-1708.
- Gillis P.L. 2012. Cumulative impacts of urban runoff and municipal wastewater effluent on wild freshwater mussels (*Lasmigona costata*). *Science of the Total Environment* 431(2012): 348-356.
- Gillis, P.L., R. McInnis, J. Salerno, S.R. De Solla, M.R. Servos and E.M. Leonard. In Press. Municipal wastewater treatment plant effluent-induced effects on freshwater mussel populations and the role of mussel refugia in recolonizing an extirpated reach. *Environmental Pollution*.
- Gillis, P.L., R.J. Mitchell, A.N. Schwalb, K.A. McNichols, G.L. Mackie, C.M. Wood, and J.D. Ackerman. 2008. Sensitivity of the glochidia of freshwater mussels to copper: assessing the effect of water hardness and dissolved organic carbon on the sensitivity of endangered species. *Aquatic Toxicology* 88: 137–145.
- Haag, W.R., D.J. Berg, D.W. Garton, and J.L. Farris. 1993. Reduced survival and fitness in native bivalves in response to fouling by the introduced zebra mussel (*Dreissena polymorpha*) in western Lake Erie. *Canadian Journal of Fisheries and Aquatic Sciences* 50: 13–19.
- Hazelton, P.D., G. Cope, T.J. Pandolfo, S. Mosher, M.J. Strynar, M.C. Barnhart, and R.B. Bringolf. 2012. Partial life-cycle and acute toxicity of perfluoroalkyl acids to freshwater mussels. *Environmental Toxicology and Chemistry* 31(7): 1611-1620.
- Kidd, K.A., P.J. Blanchfield, K.H. Mills, V.P. Palace, R.E. Evans, J.M. Lazorchak, and R.W. Flick. 2007. Collapse of a fish population after exposure to a synthetic estrogen. *Proceedings of the National Academy of Sciences of the USA* 104: 8897–8901.
- Loomis, J.B. and D.S. White. 1996. Economic benefits of rare and endangered species: summary and meta-analysis. *Ecological Economics* 18: 197–206.
- MacDougall, T.M. and P.A. Ryan. 2012. An assessment of aquatic habitat in the southern Grand River, Ontario: water quality, lower trophic levels, and fish communities. Lake Erie Management Unit, Provincial Services Division, Fish and Wildlife Branch, Ontario Ministry of Natural Resources. Port Dover, Ontario. 141 pp. + appendices.
- Mackie, G.L. 1991. Biology of the exotic zebra mussel, *Dreissena polymorpha*, in relation to native bivalves and its potential impact in Lake St. Clair. *Hydrobiologia* 219: 251-268.
- Mackie, G.L. 1996. Diversity and status of Unionidae (Bivalvia) in the Grand River, a tributary of Lake Erie, and its drainage basin. Prepared for Lands and Natural Heritage Branch, Ontario Ministry of Natural Resources, Peterborough, Ontario. 39 pp.

- Mackie, G.L., A. Drost, and A. Melkic. 2012. 2012 searches and relocation of mussels and Eastern Sand Darter in the Grand River in preparation for a new bridge at Hwy 3, Cayuga, Ontario. Final report to Ontario Ministry of Transportations and Dufferin Construction. 42 pp.
- Metcalf-Smith, J.L., S.K. Staton, and E.L. West. 2000a. Status of the Wavy-rayed Lampmussel, *Lampsilis fasciola* (Bivalvia: Unionidae), in Ontario and Canada. Canadian Field-Naturalist 114: 457–470.
- Metcalf-Smith, J.L., G.L. Mackie, J. Di Maio, and S.K. Staton. 2000b. Changes over time in the diversity and distribution of freshwater mussels (Unionidae) in the Grand River, southwestern Ontario. Journal of Great Lakes Research 26: 445-459.
- Metcalf-Smith, J., A. MacKenzie, I. Carmichael, and D. McGoldrick. 2005. Photo Field Guide to the Freshwater Mussels of Ontario. Published by St. Thomas Field Naturalist Club Inc. St. Thomas, Ontario. 60 pp.
- Metcalf-Smith, J.L., D.J. McGoldrick, C.R. Jacobs, J. Biberhofer, M.T. Arts, G.L. Mackie, V.S. Jackson, D.W. Schloesser, T.J. Newton, E.M. Monroe, and M.D. Drebenstedt. 2007a. Creation of managed refuge sites for native freshwater mussels to mitigate impacts of the exotic Zebra Mussel in the delta area of Lake St. Clair. Environment and Climate Change Canada, Burlington, Ontario. Canada. vi + 50 pp.
- Metcalf-Smith, J.L., D.J. McGoldrick, D.T. Zanatta, and L.C. Grapentine. 2007b. Development of a monitoring program for tracking the recovery of endangered freshwater mussels in the Sydenham River, Ontario. Environment and Climate Change Canada, Water Science and Technology Directorate. WSTD Contribution No. 07-510.
- Morris, T.J. 2006. Recovery strategy for the Wavy-rayed Lampmussel (*Lampsilis fasciola*) in Canada. *Species at Risk Act* Recovery Strategy Series. Fisheries and Oceans Canada, Ottawa, viii + 43 pp.
- Morris, T.J. and A. Edwards. 2007. Freshwater mussel communities of the Thames River, Ontario: 2004–2005. Canadian Manuscript Report of Fisheries and Aquatic Science 2810. v + 30 pp.
- Morris, T.J., K.A. McNichols-O'Rourke, and A. Robinson. 2012. A preliminary survey of the freshwater mussels of the Welland River watershed in 2008. Canadian Manuscript Report of Fisheries and Aquatic Sciences 2991.
- Morris, T.J., D.J. McGoldrick, J.L. Metcalfe-Smith, D. Zanatta, and P.L. Gillis. 2008. Pre-COSEWIC assessment of the Wavy-rayed Lampmussel (*Lampsilis fasciola*). DFO Canadian Science Advisory Secretariat Research Document 2008/083.
- Mummert, A.K., R.J. Neves, T.J. Newcomb, and D.S. Cherry. 2003. Sensitivity of juvenile freshwater mussels (*Lampsilis fasciola*, *Villosa iris*) to total and un-ionized ammonia. Environmental Toxicology and Chemistry 22: 2545–2553.
- Nalepa, T.F., W.S. Gardner, and J.M. Malczyk. 1991. Phosphorus cycling by mussels (Unionidae: Bivalvia) in Lake St. Clair. Hydrobiologia 219: 239-250.

- NatureServe. 2015. NatureServe explorer. (en anglais seulement) Arlington, Virginia (Accessed: March 2017).
- Nelson, M., M. Veliz, S. Staton, and E. Dolmage. 2003. Towards a recovery strategy for species at risk in the Ausable River: synthesis of background information. Prepared for the Ausable River Recovery Team. 92 pp.
- Newton, T.J. and M.R. Bartsch. 2007. Lethal and sublethal effects of ammonia to juvenile *Lampsilis* mussels (Unionidae) in sediment and water only exposures. *Environmental Toxicology and Chemistry* 26: 2057–2065.
- Newton, T.J., J.W. Allran, J.A. O'Donnell, M.R. Bartsch, and W.B. Richardson. 2003. Effects of ammonia on juvenile unionid mussels (*Lampsilis cardium*) in laboratory sediment toxicity tests. *Environmental Toxicology and Chemistry* 22: 2554–2560.
- Nichols, S.J. and D. Garling. 2000. Food-web dynamics and trophic-level interactions in a multispecies community of freshwater unionids. *Canadian Journal of Zoology* 78: 871–882.
- Parmalee, P.W. and A.E. Bogan. 1988. The Freshwater Mussels of Tennessee. The University of Tennessee Press, Knoxville, Tennessee. xi + 328 pp.
- Pip, E. 1995. Cadmium, lead and copper in freshwater mussels from the Assiniboine River, Manitoba, Canada. *Journal of Molluscan Studies* 61: 295–302.
- Pip, E. 2006. Littoral mollusc communities and water quality in southern Lake Winnipeg, Manitoba, Canada. *Biodiversity and Conservation* 15: 3637–3652.
- Portt, C., G. Coker, and K. Barrett. 2007. Recovery strategy for fish species at risk in the Grand River in Canada [Proposed]. In: *Species at Risk Act Recovery Strategy Series*. Ottawa: Fisheries and Oceans Canada. 104 pp.
- Provincial Water Quality Objectives. 1994. Ontario provincial water quality objectives (en anglais seulement) (Accessed: April 2012).
- Raikow, D.F. and S.K. Hamilton. 2001. Bivalve diets in a midwestern U.S. stream: a stable isotope enrichment study. *Limnology and Oceanography* 46: 514–522.
- Ricciardi, A., R.J. Neves, and J.B. Rasmussen. 1998. Impending extinctions of North American freshwater mussels (Unionidae) following the Zebra Mussel (*Dreissena polymorpha*) invasion. *Journal of Animal Ecology* 67: 613–619.
- Rypel, A.L., W.R. Haag, and R.H. Findlay. 2008. Validation of freshwater growth rings in freshwater mussel shells using cross dating. *Canadian Journal of Fisheries and Aquatic Sciences* 65: 2224–2232.
- Schloesser, D.W., T.F. Nalepa, and G.L. Mackie. 1996. Zebra Mussel infestation of unionid bivalves (Unionidae) in North America. *American Zoologist* 36: 300–310.

- Schwebach, M., D. Schriever, V. Kanodia, N. Dillon, M. Hove, M. McGill, C. Nelson, J. Thomas, and A. Kapuscinski. 2002. Channel catfish is a suitable host species for Mapleleaf glochidia. *Ellipsaria* 4: 12–13.
- Spooner, D.E. 2007. An integrative approach to understanding the structure and function of mussel communities. Thesis (PhD) University of Oklahoma, Norman, Oklahoma.
- Stanfield, L. and R. Kuyvenhoven. 2005. Protocol for applications used in the Aquatic Landscape Inventory Software application for delineating, characterizing and classifying valley segments within the Great Lakes basin. Ontario Ministry of Natural Resources and Forestry Report, July 27, 2005.
- Taylor, I., B. Cudmore, C. MacCrimmon, S. Madzia, and S. Hohn. 2004. The Thames River watershed: synthesis report (draft). Prepared for the Thames River Recovery Team. 74 pp.
- Tetzloff, J. 2001. Survival rates of unionid species following a low oxygen event. *Ellipsaria* 3: 18–19.
- Tetreault G.R., C.J. Bennett, K. Shires, B. Knight, M.R. Servos, M.E. McMaster. 2011. Intersex and reproductive impairment of wild fish exposed to multiple municipal wastewater discharges. *Aquatic Toxicology* 104: 278–290.
- Thames River Recovery Team. 2005. Recovery strategy for the Thames River aquatic ecosystem: 2005-2010. November 2005 Draft. 146 pp.
- Todd, A.K. and M.G. Kaltenecker. 2012. Warm season chloride concentrations in stream habitats of freshwater mussel species at risk. *Environmental Pollution* 171: 199-206.
- Upper Thames River Conservation Authority. 2003. Zebra Mussels found in Fanshawe Reservoir.
- Vaughn, C.C. and D.E. Spooner. 2006. Unionid mussels influence macroinvertebrate assemblage structure in stream. *Journal of the North American Benthological Society* 25: 691–700.
- Vaughn, C.C., K.B. Gido, and D.E. Spooner. 2004. Ecosystem processes performed by unionid mussels in stream mesocosms: species roles and effects of abundance. *Hydrobiologia* 527: 35–47.
- Vaughn, C.C., S.J. Nichols, and D.E. Spooner. 2008. Community and food web ecology of freshwater mussels. *Journal of the North American Benthological Society* 27: 409–423.
- Walpole Island Heritage Centre. 2002. Walpole Island First Nation heritage centre newsletter. Special Edition. Summer/Fall 2002. Published by the Walpole Island Heritage Centre, R.R. 3 (Walpole Island), Wallaceburg, Ontario, Canada, N8A 4K9. 16 pp.
- Watson, E.T. 2000. Distribution and life history of the Unionidae (Bivalvia: Mollusca) in the Assiniboine River drainage in Manitoba, with special reference to *Anodontoidea ferussacianus*. Thesis (M.Sc.) University of Manitoba. 159 pp.



- Watters, G.T., S.H. O'Dee, and S. Chordas. 2001. Patterns of vertical migrations in freshwater mussels (Bivalvia: Unionoida). *Journal of Freshwater Ecology* 16: 541–550.
- WQB (Water Quality Branch). 1989. The application of an interdisciplinary approach to the selection of potential water quality sampling sites in the Thames River basin. Environment and Climate Change Canada, Water Quality Branch, Ontario Region: 122 pp.
- Yeager, M.M., D.S. Cherry, and R.J. Neves. 1994. Feeding and burrowing behaviors of juvenile rainbow mussels, *Villosa iris* (Bivalvia: Unionidae). *Journal of the North American Benthological Society* 13(2): 217–222.
- Zanatta, D.T. and R.W. Murphy. 2006. Evolution of active host-attraction strategies in the freshwater mussel tribe Lampsilini (Bivalvia: Unionidae). *Molecular Phylogenetics and Evolution* 41(1): 195–208.

## Recovery Team Members

The following members of the Ontario Freshwater Mussel Recovery Team were involved in the development of the recovery strategy and action plan for Mapleleaf:

Dr. Josef Ackerman	University of Guelph
Crystal Allan	Grand River Conservation Authority
Muriel Andreae	St. Clair Region Conservation Authority
Dave Balint	Fisheries and Oceans Canada
Amy Boyko	Fisheries and Oceans Canada
Mike Nelson	Essex Region Conservation Authority
Alan Dextrase	Ontario Ministry of Natural Resources and Forestry
Scott Gibson	Ontario Ministry of Natural Resources and Forestry
Dr. Patricia Gillis	Environment and Climate Change Canada
Lee-Ann Hamilton	Niagara Peninsula Conservation Authority
Kari Jean	Ausable Bayfield Conservation Authority
Dr. Gerry Mackie	University of Guelph
Daryl McGoldrick	Environment and Climate Change Canada
Kelly McNichols	Fisheries and Oceans Canada
Dr. Todd Morris (Co-Chair)	Fisheries and Oceans Canada
Dr. Scott Reid	Ontario Ministry of Natural Resources and Forestry
Dr. Frederick Schueler	Bishop Mills Natural History Centre
Dr. Astrid Schwalb	University of Waterloo
John Schwindt	Upper Thames River Conservation Authority
Shawn Staton (Co-Chair)	Fisheries and Oceans Canada
Valerie Towsley	Lower Thames River Conservation Authority
Mari Veliz	Ausable Bayfield Conservation Authority
Dr. Daelyn Woolnough	Central Michigan University
Dr. Dave Zanatta	Central Michigan University

## Appendix A: Effects on the Environment and Other Species

A strategic environmental assessment (SEA) is conducted on all SARA recovery planning documents, in accordance with the Cabinet Directive on the Environmental Assessment of Policy, Plan and Program Proposals. The purpose of a SEA is to incorporate environmental considerations into the development of public policies, plans, and program proposals to support environmentally sound decision-making and to evaluate whether the outcomes of a recovery planning document could affect any component of the environment or achievement of any of the Federal Sustainable Development Strategy's<sup>14</sup> (FSDS) goals and targets.

Recovery planning is intended to benefit species at risk and biodiversity in general. However, it is recognized that implementation of action plans may inadvertently lead to environmental effects beyond the intended benefits. The planning process based on national guidelines directly incorporates consideration of all environmental effects, with a particular focus on possible impacts upon non-target species or habitats. The results of the SEA are incorporated directly into the recovery strategy and action plan itself, but are also summarized below in this statement.

This combined recovery strategy and action plan will clearly benefit the environment by promoting the recovery of Mapleleaf. In particular, it will encourage the protection and improvement of riverine and coastal wetland habitats in the lower Great Lakes. The majority of these habitats support species at risk from many other taxa (including birds, reptiles, fishes and plants) and thus the implementation of recovery actions for Mapleleaf will contribute to the preservation of biodiversity in general. The potential for these recovery actions to inadvertently lead to adverse effects on other species was considered. The SEA concluded that the implementation of this document will clearly benefit the environment and will not entail any significant environmental effects.

---

<sup>14</sup> [www.ec.gc.ca/dd-sd/default.asp?lang=En&n=F93CD795-1](http://www.ec.gc.ca/dd-sd/default.asp?lang=En&n=F93CD795-1)